

TRUSTED WORLDWIDE



ECHO **ADA**



ECHO **ONE**



ECHO **ZENITH**



ECHO **MAX**



Echo Series  
Toilets & Sinks



Powerful  
Deodorizers



Fragrance  
Enhancers



Cleaners &  
Degreasers



Soaps &  
Dispensers



PRO  
Accessories

**2024 Catalog**

J&J Portable Sanitation Products | [jjportable.com](http://jjportable.com)

World's Leading Manufacturer of Portable Toilet Deodorizers and Echo Portable Toilets



**TRUSTED**  
**WORLDWIDE**

J&J has built a worldwide reputation with over 57 years of innovation and leadership in effective odor control solutions as well as portable toilets and handwash stations for the portable sanitation industry.

J&J is known for developing and supplying outstanding products while providing exceptional customer service in over 120 countries. J&J will always deliver the advantages you need for success.



**HEADQUARTERS:**

Crawford, GA  
Porterville, CA  
Kenosha, WI  
Phoenix, AZ  
Moab, UT



**J&J CHEMICAL  
EUROPE GMBH**

Hamburg, Germany  
**REACH COMPLIANT**



**DIRECT  
SHIPMENT**  
Canada

**INTERNATIONAL DISTRIBUTORS**



**Australia**



**Chile**



**England**



**Mexico**



**New Zealand**



**South Africa**

**J&J Portable Sanitation Products**

Corporate Mailing Address: P.O. Box 614 • Crawford, GA 30630

© 2024 J&J Portable Sanitation Products All rights reserved

**Summer Hours:**

8:00 A.M.-6:00 P.M. Est Mon-Thurs  
8:00 A.M.-5:00 P.M. Est Fri

**Winter Hours:**

8:00 A.M.-5:30 P.M. Est Mon-Thurs  
8:00 A.M.-5:00 P.M. Est Fri

**CONTACT US TODAY!**

1-800-345-3303 • 706-743-1900 • fax 706-743-7515  
info@jjportable.com • jjportable.com



@JJPortable



@JJPortable



@JJPortables



# ACCOUNT REPRESENTATIVES



**Todd Boyd**  
CEO  
todd@jjportable.com



**David Roncadori**  
Sales Manager  
david@jjportable.com



**Tony Mattox**  
Assistant Sales Manager  
tony@jjportable.com



**Scott Clegg**  
Western Area Manager  
706-201-8892  
scott@jjportable.com



**Eric Wilson**  
Eastern Area Manager  
706-201-8891  
eric@jjportable.com



**Jan Anderson**  
Midwest Area Manager  
262-300-9112  
jan@jjportable.com



**Jaiker Cham**  
Latin American & Caribbean  
Area Manager  
706-743-1919  
jaiker@jjportable.com

# CUSTOMER SERVICE



**Jennifer Roncadori**  
Customer Service  
jennifer@jjportable.com



**Beth Oliverio**  
Customer Service  
beth@jjportable.com



**Amber Turner**  
Customer Service  
amber@jjportable.com



**Lacey Seal**  
Customer Service  
lacey@jjportable.com



**Tammy Moyer**  
Customer Service  
Transportation Specialist  
tammy@jjportable.com



**Todd "Brooks"**  
Customer Service Manager  
brooks@jjportable.com



**Asoka Moreno**  
Latin America & Caribbean  
Customer Service  
asoka@jjportable.com

# ECHO ONE

**STRONG. SMART. DURABLE.**



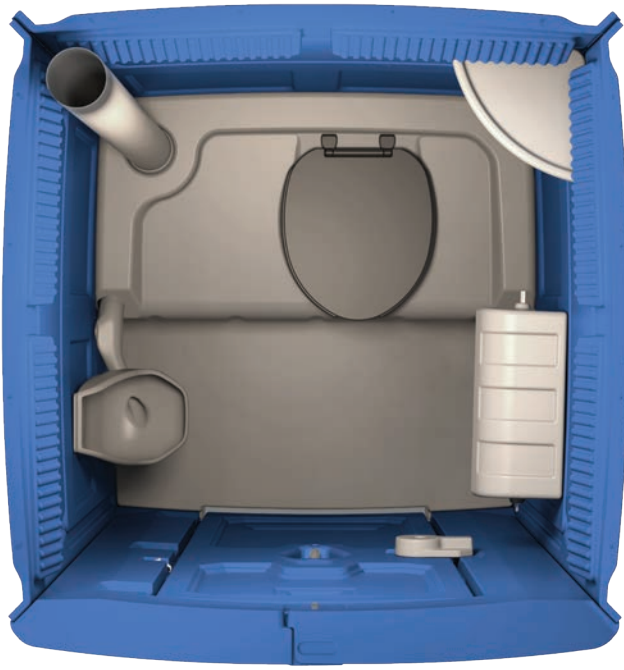
**ECHO ONE.** An exceptionally durable portable toilet that can withstand continuous use and abuse while being easy to clean and maintain. The Echo ONE offers innovative features that both operators & users will appreciate.

## **Features**

- Large 65 gallon sumped tank
- Molded-in vent screens
- Durable corner construction
- Heavy-duty rotary latch
- Stand over urinal w/ clog reducing drain tube
- Convenient coat hook, shelf and hover handle
- Corner drain roof w/ hand grip surfaces makes tilting & moving the toilet easy
- 3-heavy duty stainless steel hinges
- 10 Year Limited Warranty
- Includes the Echo series UV Color Protection Technology

## **ECHO ONE**

Weight		Height		Width		Depth		Door Opening Width		Door Opening Height		Seat Height		Tank Capacity	
lbs	kg	in	cm	Inch	cm	in	cm	in	cm	in	cm	in	cm	gal	L
164	74.3	91.5	232.4	44	111.8	48	121.9	24	61	73.5	186.7	18.5	47	65	246



### **Built for Durability**

The Echo ONE Toilet's high-density polyethylene materials can take on excessive amounts of impact & abuse with virtually no cracking or breaking.

The door opens 180° without damaging the hinges or springs, and the heavy-duty rotary latch will last for years to come. The outside walls & roof have built-in hand grip areas for effortless moving.

### **Designed for Comfort**

Inside the Echo ONE Toilet, you will enjoy its well-ventilated, roomy interior, and welcomed amenities ensuring a comfortable experience.

The offset toilet seat reduces visibility to the urinal, in turn reducing urine odor. The smart urinal provides a stand-over design with a clog & vandal resistant drain attached to the wall.

High flow molded-in vent screens provide continuous airflow while reducing odor. A back corner vent stack efficiently vents odor from the highest point of the holding tank.

Other popular features include a coat hook, corner shelf, gender-friendly hover handle, and a mirror.

### **Easy Cleaning and Maintenance**

The Echo ONE Portable Toilet is easy to clean and maintain. Smart features like a deep sumped holding tank reduces mounding and improves deodorizer coverage. A front sloping tank top and a domed floor allows liquids to drain efficiently without puddling.



## **MANY COLORS AND COMBINATIONS TO CHOOSE FROM**



# ECHO MAX

**STRONG. SMART. DURABLE.**



All NEW Echo MAX construction design utilizes the following innovative and unique features for our wheelchair accessible restroom.

- Available 45 or 70-gallon *SUMPED* bottom tank
- 4-heavy duty stainless steel hinges
- Integrated floor drainage system for easy cleaning
- Side and rear forklift access openings molded into floor
- Superior structural strength for longer life
- High flow ventilation system
- Integrated assist grab rails
- Structurally reinforced domed roof with tiedown channels for safety and secure transport
- Overlapping corner construction provides superior strength
- 2-strain relief door springs
- Includes the Echo series UV Color Protection Technology

## ECHO MAX

Weight		Height		Width		Depth		Door Opening Width		Door Opening Height		Tank Capacity	
lbs	kg	in	cm	in	cm	in	cm	in	cm	in	cm	gal	L
260	118	86.3	219.2	66	167.6	63.7	161.8	33.75	85.7	72.5	184.2	45 / 70	170 / 265

# ECHO)) ADA

**STRONG. SMART. DURABLE.**



All NEW Echo ADA compliant restroom boasts a construction design that utilizes the following innovative and unique features for our wheelchair accessible restroom.

- Full ADA compliant restroom design
- ADA compliant pneumatic door closer for ease of use
- 4-heavy duty stainless steel hinges
- Available 45 or 70-gallon SUMPED bottom tank
- Integrated floor drainage system for easy cleaning
- Side and rear forklift access openings molded into floor
- Superior structural strength for longer life
- High flow ventilation system
- Integrated assist grab rails
- Structurally reinforced domed roof with tiedown channels for safely and secure transport
- Overlapping corner construction provides superior strength
- Includes the Echo series UV Color Protection Technology

## ECHO ADA

Weight		Height		Width		Depth		Door Opening Width		Door Opening Height		Tank Capacity	
lbs	kg	in	cm	in	cm	in	cm	in	cm	in	cm	gal	L
290	132	86.3	219.2	66	167.6	89.5	227	33.75	85.7	72.5	184.2	45 / 70	170 / 265

# ECHO)) ZENITH

**STRONG. SMART. DURABLE.**



All NEW Echo ZENITH gives you the advantage over the competition with these features:

- Superior strength double wall unit
- 3-heavy duty stainless steel hinges
- Smooth interior surfaces for easy cleaning
- Integrated floor drainage system for easy cleaning
- Angled seat to reduce urinal visibility
- Molded in toilet seat guards to reduce seat breakage
- Rotary latch that Incorporates a hover handle
- Clog-resistant urinal with wider opening for ease of cleaning
- Corner construction provides superior strength
- 2-strain relief door springs
- Includes the Echo series UV Color Protection Technology

## Zenith

Weight		Height		Width		Depth		Door Opening Width		Door Opening Height		Tank Capacity	
lbs	kg	in	cm	in	cm	in	cm	in	cm	in	cm	gal	L
193	87.5	88.9	226	44	111.8	48	122	24.7	62.7	75.5	191.8	80	303

# ECHO ONE

# RECIRCULATING

## FLUSH TANK



The J&J Recirculating Flush Tank utilizes a low-maintenance, side discharge bowl design that inhibits the visibility of waste.

The hinged bowl allows for easy service and maintenance. The American made Bosworth foot pump provides for a hands free experience - no touching handles to flush.

The dual filter pickup system keeps blockage to a minimum and provides for a clean bowl and improved customer experience.

### **Features:**

- Side discharge bowl
- Dual filter pickup system
- American made Bosworth foot pump
- Stainless steel hardware
- 47 gallon sumped tank



ECHO

DOUBLE-SIDED HANDWASH STATION

STRONG. SMART. DURABLE.

A built-to-last handwash station designed for operators that expect durability, convenience, easy maintenance while being lightweight for easy transportation.

Features & Highlights

- Quick-change foot pump system
- Ergonomically correct foot pump locations
- Ground-level gray water vacuum system with built-in check valve
- Vandal-proof extended reach spigot for better forearm washing comfort
- Deep sink basin for easy forearm submersion
- Lockable, 'Easy Open' sink top for maintenance and cleaning
- High-quality Guzzler Jr. foot pumps made in the USA
- Large foot pump recess to accommodate work boots
- Two paper towel dispensers that support either 'C' or multi-fold towels
- Built-in tiedown security feature
- Molded in handles on all four sides
- Durable Stainless steel hardware
- Designed to fit inside all standard portable restrooms for transportation
- Two drain ports for easy servicing
- Large freshwater fill port



Soap Dispenser  
not included

Echo Double-sided Sink Specifications		
Height	60 in	152 cm
Width	25.5 in	65 cm
Depth	20 in	51 cm
Color	Gray	Gray
Weight Empty	56 lbs	25.4 kg
Freshwater Capacity	23 Gal	87 liters
Graywater Capacity	27 Gal	102.2 liters

# ECHO)) SINGLE & SINGLE X2

**STRONG. SMART. DURABLE.**



J&J introduces the Echo Single – a heavy duty in-unit sink that provides a large basin to accommodate hand and forearm washing.

The durable two-piece design with a quick change foot pump reduces maintenance, saving time and money. The large basin allows for easy fresh water tank inspection /cleaning while the backsplash can support optional soap dispensers.

The Echo Single X2 has all the great features of the Echo Single but is mounted back to back. One unit is used for freshwater while the other collects the gray water. The Echo Single X2 provides for an economical two bowl standalone sink that your customers will appreciate. The back to back mounted Echo Single X2 easily fits into a standard restroom for easy transport.

The Echo Single & Echo Single X2 are ideal for construction, agriculture and events.



## Features

- Vandal proof molded in spigot
- Fresh water capacity
- Fresh water fill indicators
- Removable basin for inspecting and cleaning
- ¼ turn fresh water drain plug
- Quick connect easy change Foot Pump
- Fits in most standard restrooms
- Can be mounted on either side wall of restroom

## Specifications

Description	Echo Single	Echo Single X2
Height	53 in / 135 cm	63.25 in / 161 cm
Width	19.5 in / 50 cm	22 in / 56 cm
Depth	9 in / 23 cm	20 in / 50 cm
Weight	17 lbs / 7.7 kg	42 lbs / 51 kg
Fresh Water Capacity	12.75 gal / 48.3 liters	12.75 gal / 48.3 liters
Gray Water Capacity	N/A	12.75 gal / 48.3 liters

# HANDWASH STATION



## Features & Highlights

- Sturdy, lightweight construction
- Transportable inside the restroom
- 24 gallon fresh water capacity
- 24 gallon grey water capacity
- Fresh and grey water drains
- Single piece outer body for added durability
- Enclosed fresh water tank
- Large opening at foot pump to accommodate work boots
- Basin accommodates forearm
- Two paper towel dispensers utilizes 2-fold paper towel
- Molded base to prevent wear on tanks when being moved
- Fill and evacuation ports for easy service
- Convenient hand-holds for easy movement

<b>J&amp;J'S HANDWASH STATION</b>	<b>Counter Height</b>	<b>Total Height</b>	<b>Width</b>	<b>Length</b>	<b>Weight</b>
<b>U.S. Standard</b>	35.5"	50"	17.5"	28"	65 lbs
<b>Metric</b>	902mm	1270mm	445mm	711mm	29kg



## LIQUIDS

## PORTION CONTROL

## PRO ACCESSORIES



Truex Liquid Power pg. 17



Truex Power Packets pg. 15



Everpro Elite Tablets pg. 18



Propaxx Elite Packets pg. 19



J-Spray XT pg. 23



J-Disk pg. 24



J-Screen pg. 25



Truex Squeeze Bottle pg. 16



Art Blaster & Graffiti Blaster pg. 26

Availability and Pricing Subject to Change.

# FRAGRANCES

We source the world for the most extensive lines of oils and raw materials allowing us to create and manufacture the strongest, longest lasting deodorizers at the lowest cost in the industry.

**LONGEST-LASTING** PERFORMANCE

**ODOR-CRUSHING** TECHNOLOGY

**EXCLUSIVE** FRAGRANCES



Baby Powder



Black Glacier



Bubble Gum



Cherry



Cinnamon Burst



Citronella Plus



Citrus Spice



Coconilla



Flower Power



Fresh Blossom



Fresh & Clean



Coco Mint



Green Apple



Hawaiian Blossom



Lemon Fresh



Mango



Melon Fresh



Mountain Fresh



Mulberry



Peppermint



Spice



Spicy Cherry



Spicy Cinnamon



Spring Burst



Summer Linen



Sun Burst



Sunsation



Super Berry



Tahiti Breeze



Tahiti Coconut



Tangerine

*Other J&J proprietary fragrances available*

**ROTATE FRAGRANCE OFTEN TO PREVENT FRAGRANCE FATIGUE**

The **Safest, Easiest** Way To **Deodorize** Portable Toilets®

# TRUEX POWER PACKET

## HOLDING TANK DEODORIZER

Non-Staining  
Blue Color

Breaks Down  
Paper & Waste



Water Soluble  
Portion Control

No Mess.  
No Spills.  
No Problem.

Non-Formaldehyde

**STRONGER** PERFORMANCE

**SUPERIOR** ODOR PREVENTION

**LONGER-LASTING** FRAGRANCE

### PLATINUM

**Most powerful  
deodorizer packet**

60 packets per bag  
240 packets per case  
4 bags per case

**Maximum  
Strength**

### GOLD

**Extreme  
heat & traffic**

60 packets per bag  
240 packets per case  
4 bags per case

**Super  
Strength**

### EXTREME

**Moderate  
heat & traffic**

80 packets per bag  
320 packets per case  
4 bags per case

**Moderate  
Strength**

### SILVER

**Moderate  
heat & traffic**

80 packets per bag  
320 packets per case  
4 bags per case

**Great for  
Events**

### BRONZE

**Moderate/light  
heat & traffic**

100 packets per bag  
400 packets per case  
4 bags per case

**Great for  
Events**

The Perfect **No Leak, Easy To Use** Portion Control

# TRUEX **POWER** SQUEEZE BOTTLE

## HOLDING TANK DEODORIZER

Convenient  
1-Liter Bottle of  
Truex Liquid Power

Reusable Bottle



Reduces  
Costly Spills

Speeds Up  
Productivity

**QUICK** PERFORMANCE

**DEEP** BLUE COLOR

**LONG-LASTING** FRAGRANCE

Non-Formaldehyde • Advanced Time-Released Formula • Breaks Down Paper & Waste  
Reduces Mounding • Goes to Work Immediately

**1 SHOT**

**135 services**  
per bottle

Cool Temperatures  
Special Events & Light Traffic

**2 SHOTS**

**68 services**  
per bottle

Moderate/Hot Temperatures  
& Moderate/Heavy Traffic

**3 SHOTS**

**45 services**  
per bottle

Extreme Temperatures  
& Heavy Traffic

(12 x 1 bottles per case)

The Most Powerful **Non-Formaldehyde Deodorizer** Worldwide

# TRUEX POWER LIQUID

## HOLDING TANK DEODORIZER

Non-formaldehyde  
Odor-Crushing Protection

Prevents  
Scale Buildup



Breaks Down  
Paper & Waste  
Reducing Mounding

Guaranteed Performance

**SUPERIOR** ODOR CONTROL

**DEEP** BLUE COLOR

**LONG-LASTING** FRAGRANCE

### **TRUEX LP 555**

**Most Popular  
Super-Concentrate**

- For high traffic and extreme heat
- 1-2 oz. (~30-60 ml.) per service

### **TRUEX LP 545**

**Cost Effective  
Super-Concentrate**

- For high traffic and extreme heat
- 1-2 oz. (~30-60 ml.) per service

### **TRUEX LP 535**

**Most Powerful  
Concentrate**

- Powerful odor control protection for moderate heat
- 1-3 oz. (~30-90 ml.) per service

### **TRUEX LP 525**

**Cost Effective  
Concentrate**

- Perfect concentrate alternative for events
- 2-4 oz. (~60-120 ml.) per service

### **TRUEX LP 515**

**The Most Powerful  
RTU**

- High performance, ready-to-use odor control
- 3-5 oz. (~90-150 ml.) per service

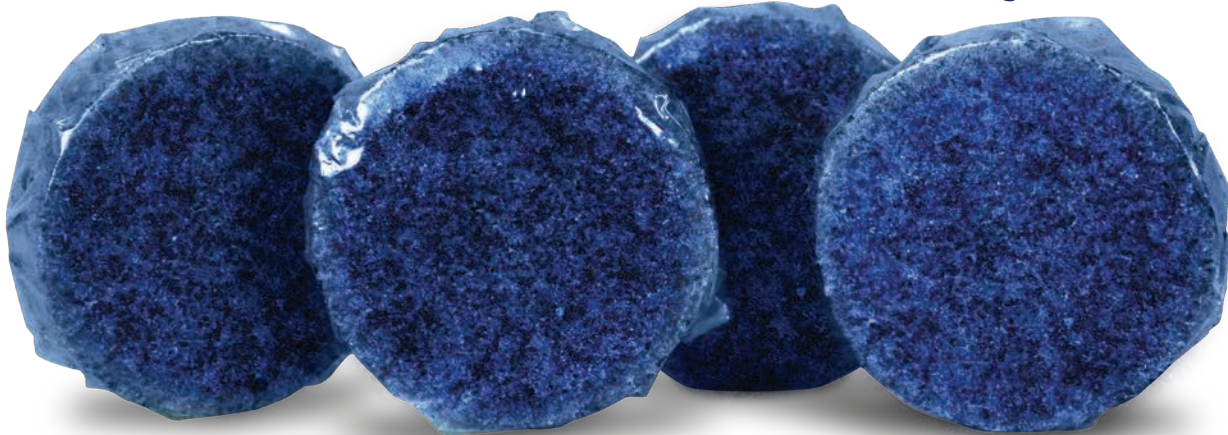
The **Safest, Easiest** Way To **Deodorize** Portable Toilets®

# EVERPRO **ELITE** TABLET

## HOLDING TANK DEODORIZER

Self-Mixing, Effervescent  
Portion Control

Helps to Clean  
the Holding Tank



Dissolves  
in Brine

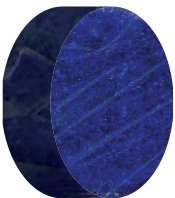
No Mess.  
No Spill.  
No Problem.

**POWERFUL** FRAGRANCE

**LONG-LASTING** DEEP BLUE COLOR

**EFFERVESCENT** ACTION

**GOLD**

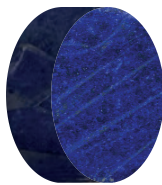


**Most powerful  
deodorizer tablet**

45 tablets per bag  
180 tablets per case  
4 bags per case

**Maximum Strength**

**EXTREME**

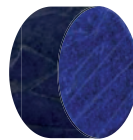


**Moderate  
heat & traffic**

50 tablets per bag  
200 tablets per case  
4 bags per case

**Super Strength**

**SILVER**

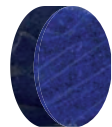


**Moderate  
heat & traffic**

55 tablets per bag  
220 tablets per case  
4 bags per case

**Great for Events**

**BRONZE**



**Moderate/light  
heat & traffic**

75 tablets per bag  
300 tablets per case  
4 bags per case

**Great for Events**

The **Safest, Easiest** Way To **Deodorize** Portable Toilets®

# PROPAXX **ELITE**

# PACKET

## HOLDING TANK DEODORIZER

Non-Staining  
Blue Color

Self-Mixing

Breaks Down  
Paper & Waste



Water Soluble  
Portion Control

No Mess.  
No Spills.  
No Problem.

Non-Formaldehyde

**HIGH** PERFORMANCE

**DEEP** BLUE COLOR

**LONG-LASTING** FRAGRANCE

**GOLD**

**Extreme  
heat & traffic**

60 packets per bag  
240 packets per case  
4 bags per case

**Maximum  
Strength**

**EXTREME**

**Moderate  
heat & traffic**

80 packets per bag  
320 packets per case  
4 bags per case

**Super  
Strength**

**SILVER**

**Moderate  
heat & traffic**

80 packets per bag  
320 packets per case  
4 bags per case

**Great for  
Events**

**BRONZE**

**Moderate/Light  
heat & traffic**

100 packets per bag  
400 packets per case  
4 bags per case

**Great for  
Events**

# EVERGREEN

NATURAL HOLDING TANK DEODORIZERS



## EVERGREEN LIQUID

- All Natural Odor Control
- Fast Acting, Highly Effective
- Non-Staining Color
- Works In All Climates
- Biodegradable

### EG LIQUID

**Maximum  
Performance  
Super Charged!**

- For high usage & extreme conditions
- 2-4 oz (~60-120 ml.) per service

*Call for available fragrances*

**FASTER** PERFORMANCE

**DEEP** BLUE COLOR

**LONG-LASTING** FRAGRANCE

## EVERGREEN PACKET



### GOLD

**Extreme  
heat & traffic**

60 packets per bag  
240 packets per case  
4 bags per case

**Super  
Strength**

- Fast Acting, Highly Effective
- Breaks Down Paper & Waste
- Non-Staining Color
- Quick Dissolving
- Works In All Climates
- Biodegradable

Available In:



Fresh Blossom

## EVERGREEN TABLET



### GOLD

**Extreme  
heat & traffic**

45 tablets per bag  
180 tablets per case  
4 bags per case

**Super  
Strength**

- All Natural Odor Control
- Fast Acting, Highly Effective
- Non-Staining Color
- Works In All Climates
- Biodegradable
- Breaks Down Paper & Waste

Available In:



Fresh & Clean



Mulberry

# **DESTROYER** **LIQUID**

## HOLDING TANK DEODORIZER

Formaldehyde  
Deodorizing Liquid  
Combined with  
Truex Technology



Breaks Down  
Paper & Waste  
Reducing Mounding

**SUPERIOR** PERFORMANCE

**DEEP** BLUE COLOR

**LONG-LASTING** FRAGRANCE

### **DESTROYER SX-950**

#### **Premium Formula**

- For the most demanding, extreme heat and over usage
- 1-3 oz per service

### **DESTROYER SX-850**

#### **Super Strength**

- For extreme heat & traffic conditions
- 2-6 oz per service

### **DESTROYER SX-721**

#### **Powerful Blend**

- For extreme/moderate heat & traffic conditions
- 2-8 oz per service

### **DESTROYER SX-300**

#### **Ready-To-Use Formula**

- RTU Formula for moderate heat & traffic conditions
- 4-10 oz per service

Amazing Clean, Fresh & Ready in **Less than 24 Hours**

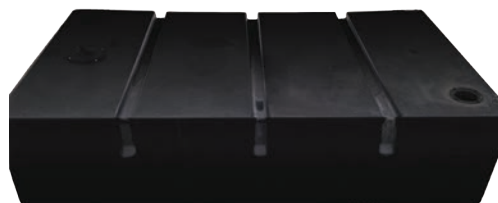
# DISINTEGRATOR HOLDING TANK CLEANER



- Breaks down buildup inside the holding tank
- Helps prevent odor

## DISINTEGRATOR

1 packet per 100 gallons of water  
40 packets per 1 gal container



Drop one (1) packet per 100 gallons of water.  
Fill tank to capacity and let sit for 12 to 24 hours.

The **Safest, Easiest Way** to Produce a **Healthy Septic System**

# SEPTIC SYSTEM TREATMENT

With monthly use **J&J Septic System Treatment packet** provides billions of scientifically selected bacteria that go to work right away replenishing enzymes in your septic system needed to break down solids, scum and sludge. Regular use of J&J Septic System Treatment packet can help reduce back up, drain field damage from solids and other costly repairs.

J&J Septic System Treatment packet is easy to market to your customers with your company contact information on the label to help YOU generate future business.



**Label With Your Company Name  
& Generate Future Business**

# J-SPRAY XT

## FRAGRANCE **SPRAY**

Powerful fragrance  
that lasts for days!

For Portable Toilets  
& Restroom Trailers



Extra Long-Lasting  
Odor Control

Perfect washdown  
solution for the  
fresh water tank  
by adding 1-2 oz per  
100 gallons of water.

**24/7** ODOR PROTECTION

**CONVENIENT & EASY SPRAY**

**LARGE** FRAGRANCE SELECTION

### J-Spray XT

**12 x 1 Qt**

**1 Gallon**

**5 Gallon**

**55 Gallon**



### Quart Bottles with Heavy Duty Sprayer

Our quart bottles & triggers  
are a perfect addition  
to your J-Spray XT purchase

**Qt Bottle & Sprayer**



Bubble Gum



Cherry



Citronella Plus



Coconilla



Coco Mint



Flower Power



Fresh Blossom



Fresh & Clean



Green Apple



Hawaiian Blossom



Lemon Fresh



Mango



Mountain Fresh



Mulberry



Peppermint



Spice



Spicy Cinnamon



Spring Burst



Summer Linen



Sun Burst



Super Berry



Tahiti Breeze



Tahiti Coconut



Tangerine

# J-DISK

## FRAGRANCE **ENHANCING DISK**

Behind  
the Urinal

Place outside  
of the toilet paper rod

Near the Vent Pipe,  
Screen or  
Trash Receptacle

**24/7** ODOR PROTECTION

**CONVENIENT & EASY SIZE**

**LARGE** FRAGRANCE SELECTION

### **GOLD**

**Up to 30 days**  
*depending on conditions*

100 disks per bag  
500 disks per case  
5 bags per case

### **EXTREME**

**Up to 28 days**  
*depending on conditions*

200 disks per bag  
1000 disks per case  
5 bags per case

### **SILVER**

**Up to 21 days**  
*depending on conditions*

250 disks per bag  
1250 disks per case  
5 bags per case

Contact us for available strengths



# J-SCREENS


FRAGRANCE **ENHANCING SCREEN**



**GOLD**

24 screens per bag

**Up to 30 Days  
of Fragrance**

- Perfect Fragrance Enhancer Replacement for the Urinal
-  VOC Compliant and meets LEED sustainable criteria
- Available in All 50 States

**LONG-LASTING** FRAGRANCE

**CONVENIENT & EASY** SIZE

**LARGE** FRAGRANCE SELECTION

## URINAL BLOCKS



Available in  
**3 oz. & 4 oz.**

**BLOCKS**

144 Blocks per case  
12/12 count boxes

**Cherry Scented**

The **Perfect Graffiti Remover** for your  
Portable Toilets in the **Field and the Yard!**

# GRAFFITI REMOVERS

Removes Paint

Pen

Marker

Pencil

Crayon and more!



**Art Blaster** is a powerful Liquid graffiti remover, cleaner & protector that is designed to quickly and easily remove graffiti. Leaves a protective sheen with a **green apple scent**.

## CLEANS UP GRAFFITI QUICK & EASY IN THE FIELD

<b>1 Qt</b> (2 Qt. Min.)	2 Sponges & 1 Trigger
<b>12 x 1 Qt Case</b>	12 sponges & 3 triggers
<b>1 Gal</b>	4 sponges
<b>4 x 1 Gal</b>	12 sponges
<b>5 Gal</b>	18 sponges
<b>55 Gal</b>	60 sponges

*Safer than aerosols leaving no harsh fumes.*



**Graffiti Blaster** is a Gel-like liquid that clings to the sidewalls of your portable toilet while cutting through the most difficult, baked-in graffiti, fast & easy!

## CUTS THROUGH & REMOVES THE MOST DIFFICULT GRAFFITI. PERFECT FOR YARD USE

<b>1 Qt</b> (2 Qt. Min.)	2 Sponges & 1 Trigger
<b>12 x 1 Qt Case</b>	12 sponges & 3 triggers
<b>1 Gal</b>	4 sponges
<b>4 x 1 Gal</b>	12 sponges

*Safer than aerosols leaving no harsh fumes.*

Use our **50% STRONGER double-sided sponge** along with any of our graffiti removers to maximize cleaning power and remove stubborn graffiti.



# CLEANERS & DEGREASERS



## **SUPER BLUE**

### All Purpose Cleaner & Degreaser

- *Perfect for cleaning portable toilets, trailers, & fleet vehicles.*
- 10X stronger than most household all purpose cleaners
- Removes stubborn grease, mud, mildew, stains, soap, scum, soot, gum, resin, oil, dye, and ink.
- Mix 10:1 will give you a strong cost effective cleaner.



## **HOME RUN**

### All Purpose Cleaner & Degreaser

- *Perfect for cleaning portable toilets, trailers, & fleet vehicles.*
- Aggressive one-step cleaner designed for painted vehicle surfaces as well as plastic and fiberglass portable toilets removing dirt, road film and grime.
- Works well through a pressure washer or automatic drive-thru. Very effective at keeping your trucks clean!
- Dilute as high as 45:1.



## **URINX II**

### General Purpose Urinal Cleaner

- Removes calcium deposits caused by urine and with regular use reduce calcium build-up in portable restroom urinal.
- Can be used as a general-purpose cleaner and is especially effective at removing mold and mildew from your restrooms.



## **URINAL CLEANER**

### LOW pH Urinal Cleaner & Protection

- A low pH urinal cleaner that removes urine buildup in portable restroom urinals and on the restroom floor faster & safer.
- This formula will lower the pH of the waste helping to keep it neutral for waste treatment plants.

# CLEANERS & DEGREASERS

## NEW! J&J GREEN

All-purpose super concentrated cleaner removes dirt, grease and stains



- *Perfect for cleaning portable toilets, trailers, & fleet vehicles.*
- Great for cleaning counters, carpet, fabric, equipment and more.
- Ready-to-use formula for cleaning hard to clean mess or dilute for daily cleaning
- Deodorizes as it cleans with a refreshing lemon scent
- Can be used manually or in equipment such as floor scrubbers, carpet cleaners, pressure washers and parts washers
- Non-abrasive, non-flammable, non-caustic and phosphate-free



## NEW! LAVULOUS

All-purpose Cleaner

Lavulous is an all-purpose cleaner with a long-lasting lavender scent designed for general cleaning leaving a fresh clean scent without any residue. Ready-to-use formula. Just spray on and wipe clean.

*Perfect for cleaning restroom trailers & portable toilets.*



## NEW! FRESH-TRAP

Waterless Urinal Treatment

Fresh-Trap is a powerful liquid odor control solution for no-flush waterless urinals that effectively traps urine odor while releasing a long-lasting fragrance, leaving your waterless urinal smelling irresistibly fresh and clean.

# HAND SOAPS & SANITIZERS

## GEL & FOAM SOAPS



**HAND SANITIZER INSTANTLY**

- Waterless hand wash
- Smooth gel disinfectant without needing to dry off hands.
- Biodegradable



**PINK LOTION HAND SOAP**

- General-purpose
- Instant sudsing
- Opaque pink formula
- Fresh clean fragrance
- For light/medium soil removal
- Contains Aloe & Vitamin E



**ANTI-BACTERIAL LOTION SOAP**

- Orange lotion soap
- Kills 99% of most disease causing germs.
- Biodegradable



**FOAMING HAND SANITIZER**

- Waterless wash
- Light lime fragrance
- Disinfectant that kills 99% of most disease causing germs
- Dye-Free & Alcohol-Free & Biodegradable



**ANTI-BACTERIAL FOAMING HAND SOAP**

- Spring-sweet citrus fragrance w/ Aloe and Vitamin E
- Golden Colored
- Kills 99% of most disease causing germs
- Biodegradable



**FOAMING LUXURY SOAP**

- Ruby red lotion soap
- Tropical fragrance with Aloe and Vitamin E
- Biodegradable

10-1000 ml boxless bags per case

6-1000 ml boxless bags

## GEL & FOAM SOAP DISPENSERS



**NO TOUCH! FOAMING DISPENSER**

- Automatic Foaming Soap Dispenser
- Stand available for purchase upon request



**FOAMING DISPENSER**

Comes with Unique Push Pad Placement & Wall Mounted System



**REFILLABLE SOAP DISPENSER**

Perfect for J&J 80% Ethanol Gel Hand Sanitizer and the new improved Gel Pink Hand Soap.



**HAND GEL DISPENSER**

Hand Soap Dispenser comes with Unique Push Pad Placement & Wall Mounted System

## GEL & FOAM SOAP DISPENSERS



**HAND SANITIZER ALCOHOL ANTISEPTIC 80% ETHANOL GEL**

Hand sanitizer to help reduce bacteria that potentially can cause disease. Perfect to use when soap and water are not available.



**PINK HAND SOAP**

- Traditional Hand Cleaner that works well in both hot and cold water, as well as soft or hard water
- Fresh & Clean fragrance
- Pink color
- Biodegradable



**PRIVATE LABEL YOUR GEL DISPENSER**

Increase your presence by adding a private label of your company's brand on to J&J's hand gel dispensers.



**300 minimum order**

Call for more details.  
1-800-345-3303 • 706-743-1900

# ACCESSORIES

## BRUSH ASSORTMENT



**20" LONG HANDLE (#70) MAROON**  
Long firm dense bristles

**20" LONG HANDLE (#78) TAN**  
Long bristle brush

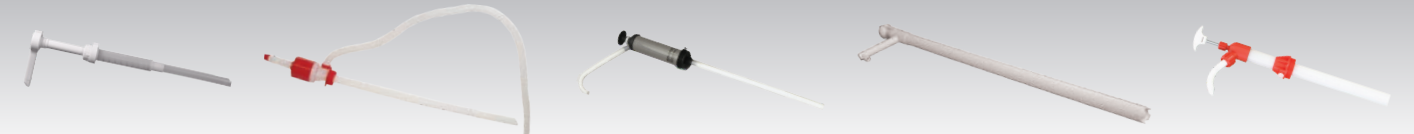
**20" LONG HANDLE (#43) GREEN**  
Long soft bristles

**8 1/2" SHORT HANDLE (#68) MAROON**  
Short firm dense bristles

**8 1/2" SHORT HANDLE (#75) TAN**  
Short soft bristles

**10" GREEN TRUCK WASH BRUSH**  
Will fit most screw-in type handles

## PUMP ASSORTMENT



**1 OZ PUMP - HEAVY DUTY**  
Constructed with two glass ball valves to prevent leakage and resistant to fatigue

**SIPHON DRUM PUMP PUSH ACTION**  
For 55 gallon pump

**MR-50 PAIL PUMP #2**  
For 5, 7 & 15 gallon pails) Calibrations from 8-16 oz

**NX 200 DRUM PUMP**  
For 55 gallon drums

**NYLON, PISTON ACTION DRUM PUMP (#44193)**  
For 55 gallon drums

## SPIGOTS & WRENCHES



**3/4" SPIGOT**

**3/4" DRUM FAUCET BOTTLE REFILL**

**LARGE SPIGOT**  
For 55 gallon drums

**DRUM WRENCH**  
For 55 gallon drums

**PAIL WRENCH NYLON**  
70mm - 5 & 7 gal pails

**PAIL WRENCH ALUMINUM**  
70mm - 5 & 7 gal pails

## OTHER ACCESSORIES



**PUMP OIL CONTROLLER ADDITIVE IN 1 GAL CHERRY SCENTED**

**CHLORINATION TABLETS 32 BOTTLES PER CASE**  
Perfect for your portable sinks. 225 tablets per bottle.

**CHLORINE NEUTRALIZER 40 LB PAIL**  
J&J Chlorine Neutralizer crystals protect your dye from premature breakdown due to chlorine in your water supply.

**DEGLACIATOR**  
Deglaciator is the perfect freeze prevention solution for your free-standing hand wash stations and other equipment you need to protect during cold weather.

**GRAB-IT**

### ODO-MATIC ODOR NEUTRALIZER

J&J's Odo-Matic odor eliminating spray neutralizes most offensive odors. Works against malodors including urine, feces, food, body odors, decay, mildew, staleness and smoke.

**Available sizes**  
1Qt (1 trigger sprayers) , 12x1 Qt (1 trigger sprayers), & 5 Gal.

**Available in these fragrances:**  
Cherry, Coconilla, Tahiti Breeze & Linen Fresh



### ODO-MATIC VPE

**Vacuum Pump Exhaust Deodorizing System for Waste Pump Trucks**

- Deactivate Offensive Odors
- Natural, Non-Toxic Formula
- Boost Customer Satisfaction



VPE 2" Exhaust - Small	19"L c x 6"H - 2 gal tank
VPE 3" Exhaust - Medium	20"L x 8"W x 10"H - 6 gal tank
VPE 4" Exhaust - Large	24"L x 12"W x 12"H - 14 gal tank
VPE Deodorizer	Available in 1 gal & 5 gal

# ACCESSORIES

## TOILET & SINK ACCESSORIES



**TOILET PAPER GUARD  
W/ ROD - 2 ROLL**

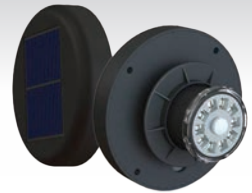


**TOILET PAPER GUARD  
W/ ROD - 3 ROLL**



**J-LIGHT 45**

- 5 Super bright, cool white LED's emitting 45 Lumens
- 3.2V 600mAh Li-ion rechargeable battery
- Requires 1.5" hole (36 mm)



**J-LIGHT 65**

- 10 Super bright, cool white LED's emitting 65 Lumens
- 3.2V 1500mAh Li-ion rechargeable battery
- Requires 2" hole (50 mm)



**TOWEL DISPENSER**  
For "C" or Multi-fold towels.



**WALL URINAL**



**GUARD SECURITY  
LOCK**

**BRIGHTER LED'S • MORE POWERFUL RECHARGEABLE BATTERY  
SMART MOTION SENSOR ONLY ACTIVATES AT NIGHT**



**PORTA-DRY BLADE**  
**12" BLADE**      **18" BLADE**  
with adapter

**J-PATCH  
QUICK & DURABLE REPAIR PATCH**

- Cures Fast in Sunlight or UV Light
- Permanently Fix Holes, Cracks & Tears
- Air Tight and Water Tight Seal
- Impact Resistant
- Can be Drilled, Sanded, & Painted
- Rot-proof and Waterproof



## BOTTLES & CONTAINERS

### HAVE YOUR BOTTLES LABELED

J&J offers custom labeled containers that will help you keep track of your liquid deodorizers, fragrance enhancers, or any cleaners that you have loaded on your truck.

Contact us for pricing. 1-800-345-3303 • 706-743-1900



**QUART BOTTLE**



(Cap available)

**QUART BOTTLE**



**W/ HEAVY DUTY  
TRIGGER SPRAYER**

**1 GALLON JUG**



**BRACKET FOR 1 GAL JUG**



**SQUEEZE & POUR  
(32 OZ. BOTTLES  
1 OZ. CHAMBER)**



**SQUEEZE & POUR  
(67 OZ. BOTTLES  
4 OZ. CHAMBER)**



## J&J Portable Sanitation Products

P.O. Box 614  
Crawford, GA 30630



PRSRT STD  
U.S. POSTAGE  
PAID  
ATHENS, GA  
PERMIT #515

### J&J'S DISTRIBUTION CENTER

DIRECT SHIPPING FOR ECHO SERIES PORTABLE TOILETS



### J&J Portable Sanitation Products

Crawford, GA • Porterville, CA • Kenosha, WI • Phoenix, AZ • Moab, UT

© 2024 J&J Portable Sanitation Products All rights reserved



1-800-345-3303  
706-743-1900  
fax 706-743-7515  
info@jjportable.com  
jjportable.com



@JJPortable



@JJPortable



@JJPortables

#### SUMMER HOURS:

8:00 A.M.-6:00 P.M. Est Mon-Thurs

8:00 A.M.-5:00 P.M. Est Fri

#### WINTER HOURS:

8:00 A.M.-5:30 P.M. Est Mon-Thurs

8:00 A.M.-5:00 P.M. Est Fri

