

**CALL TODAY!**  
TOLL-FREE 1-800-345-3303

**2026**



## **J&J PRODUCT GUIDE**



ECHO ADA

ECHO ONE

ECHO ZENITH

ECHO MAX

The **Safest, Easiest** Way To **Deodorize Portable Toilets®**



HOLDING TANKS,  
SINKS, & URINALS



POWERFUL  
DEODORIZERS



FRAGRANCE  
ENHANCERS



CLEANERS &  
DEGREASERS



SOAPS &  
DISPENSERS



PRO  
ACCESSORIES



# TRUSTED WORLDWIDE

J&J has built a worldwide reputation with over 59 years of innovation and leadership in effective odor control solutions as well as portable toilets and handwash stations for the portable sanitation industry.

J&J is known for developing and supplying outstanding products while providing exceptional customer service in over 120 countries. J&J will always deliver the advantages you need for success.



#### HEADQUARTERS:

Crawford, GA  
Porterville, CA  
Kenosha, WI  
Phoenix, AZ  
Moab, UT



#### J&J CHEMICAL EUROPE GMBH

Hamburg, Germany  
**REACH COMPLIANT**



#### DIRECT SHIPMENT Canada

#### INTERNATIONAL DISTRIBUTORS



Australia



Chile



England



Mexico



New Zealand



South Africa

#### J&J Portable Sanitation Products

Corporate Mailing Address: P.O. Box 614 · Crawford, GA 30630

© 2026 J&J Portable Sanitation Products All rights reserved

#### Summer Hours:

8:00 A.M.-6:00 P.M. Est Mon-Thurs  
8:00 A.M.-5:00 P.M. Est Fri

#### Winter Hours:

8:00 A.M.-5:30 P.M. Est Mon-Thurs  
8:00 A.M.-5:00 P.M. Est Fri

#### CONTACT US TODAY!

1-800-345-3303 · 706-743-1900 · fax 706-743-7515

info@jjportable.com · jjportable.com



@JJPortable



@JJPortable



@JJPortables



## ACCOUNT REPRESENTATIVES & CUSTOMER SERVICE TEAM



**Todd Boyd**  
CEO  
todd@jjportable.com



**David Roncadori**  
Director of Sales  
david@jjportable.com



**Scott Clegg**  
Western Area Manager  
706-201-8892  
scott@jjportable.com



**Eric Wilson**  
Eastern Area Manager  
706-201-8891  
eric@jjportable.com



**Jan Anderson**  
Midwest Area Manager  
262-300-9112  
jan@jjportable.com



**Jaiker Cham**  
Latin American &  
Caribbean Area Manager  
706-201-0311  
jaiker@jjportable.com



**Tammy Moyer**  
Western Area  
Sales Representative  
512-369-9365  
tammy@jjportable.com



**Josh Howard**  
Eastern Area  
Sales Representative  
706-255-4958  
josh@jjportable.com



**Tonya Ray**  
Account Specialist  
706-206-4700  
tonya@jjportable.com



**Tony Mattox**  
Assistant Sales Manager  
tony@jjportable.com



**Juana Torres**  
California Plant  
General Manager  
559-783-9220  
juana@jjportable.com



**Gavin Peppers**  
Customer Service  
gavin@jjportable.com



**Lacey Seal**  
Customer Service  
lacey@jjportable.com



**Beth Oliverio**  
Customer Service  
beth@jjportable.com



**Jennifer Roncadori**  
Customer Service  
jennifer@jjportable.com



**Amber Turner**  
Customer Service  
amber@jjportable.com

# ECHO SERIES

## Portable Restroom Lineup



### **Echo ONE Portable Restroom**

Durable standard portable restroom featuring a large sumped tank, improved ventilation, and designed for efficient servicing.

*page 5*



### **Echo Recirculating Flush Tank**

Recirculating flush tank with hands free foot pump, hinged bowl, and dual filter system that reduces blockage and improves cleanliness.

*page 7*



### **Echo Zenith Portable Restroom**

Premium high traffic portable restroom with double wall construction, large sumped tank, hands free door, clog resistant urinal, and reinforced design delivering durability efficiency performance.

*page 6*



### **Echo Max Portable Restroom**

Spacious wheelchair accessible portable restroom offering an alternative to ADA units, featuring large sumped tanks, reinforced construction, and operator focused design for durability and servicing.

*page 8*



### **Echo ADA Portable Restroom**

Fully ADA compliant wheelchair accessible portable restroom featuring large sumped tanks, reinforced construction, operator focused design delivering durability, servicing, and long lasting performance for operators.

*page 9*



# ECHO ONE

## Portable Restroom

**STRONG. SMART. DURABLE.**



The Echo One is our standard portable restroom engineered for durability, service efficiency, and improved user experience. Featuring a large 65 gallon sumped holding tank, the Echo One is optimized for better waste management and enhanced deodorizer coverage, helping operators maintain cleaner units between services.

Built with reinforced corner construction, molded in vent screens, and UV color protection technology, the Echo One delivers long term structural integrity and reduced odor buildup. A stand over urinal with a clog reducing drain tube, heavy duty rotary latch, and three stainless steel hinges ensure dependable operation in demanding environments. Designed with a corner drain roof and hand grip surfaces, the Echo One also supports easy handling, transport, and efficient water runoff during servicing.

- ▶ **Large 65-Gallon Sumped Tank**  
*Optimized for better waste management and improved deodorizer coverage.*
- ▶ **Corner Drain Roof with Hand Grip Surfaces**  
*Engineered for efficient water runoff and easy tilting and transport.*
- ▶ **Molded-In Vent Screens**  
*High-flow ventilation reduces odors and enhances airflow.*
- ▶ **Durable Corner Construction**  
*Reinforced for superior strength and long-lasting performance.*
- ▶ **Three Heavy-Duty Stainless Steel Hinges**  
*Ensures smooth operation and long-term durability.*
- ▶ **Stand-Over Urinal with Clog-Reducing Drain Tube**  
*Designed for better drainage and minimal maintenance.*
- ▶ **Heavy-Duty Rotary Latch**  
*Secure, impact-resistant, and built for years of use.*
- ▶ **UV Color Protection Technology**  
*Maintains color vibrancy and prevents material degradation from sun exposure.*



**Sloped tank and base with drain holes for easy cleaning**



**Corner drain roof w/hand grip for easy tilt and moving**



**Heavy-duty rotary latch**



**Molded-in vent screens**

SPECS	U.S. (LBS/IN/GAL)	METRIC (KG/CM/L)
Weight	164 lbs	74.3 kg
Height	91.5 in	232.4 cm
Width	44 in	111.8 cm
Depth	48 in	121.9 cm
Doorway Width	24 in	61 cm
Doorway Height	73.5 in	186.7 cm
Seat Height	18.5 in	47 cm
Tank Capacity	65 gal	246 L

### Standard Colors



### Premium Colors



### Combo Assortments Available (call for more options)



### WATCH VIDEOS HERE



# ECHO ZENITH

## Double Wall Portable Restroom

**STRONG. SMART. DURABLE.**



The Echo Zenith Portable Restroom offers superior strength and durability with its blow-molded double-wall construction and interlocking corner design.

Featuring a 65-gallon sumped bottom tank, three heavy-duty stainless steel hinges, an angled seat for reduced urinal visibility, patented hands free, no touch door opening, and molded-in seat guards to prevent breakage, this unit is built to last. The clog-resistant urinal, wide opening, and integrated floor drainage system ensure easy cleaning, while the rotary latch with hover handle provides convenience. Additional features include two strain-relief door springs and Echo series UV Color Protection Technology for long-lasting performance in outdoor environments. Ideal for high-traffic use, the Echo Zenith sets the standard for portable sanitation.

- ▶ **Double-wall unit for superior strength**
- ▶ **Three heavy-duty stainless steel hinges**
- ▶ **Smooth interior surfaces with an integrated floor drainage system for easy cleaning**
- ▶ **Angled seat for more legroom and reduced urinal visibility**
- ▶ **Molded-in toilet seat guards to reduce seat breakage**
- ▶ **Patented hands free door opening**
- ▶ **Rotary latch incorporating a hover handle**
- ▶ **Clog-resistant urinal with a wider opening for easier cleaning**
- ▶ **Interlocking corner design for superior strength**
- ▶ **Two strain relief door springs**
- ▶ **Includes the Echo Series UV Color Protection Technology**
- ▶ **Available in a 65-gallon sumped bottom tank**



**2-strain relief door springs**



**3-heavy duty stainless steel hinges**



**Integrated floor drainage system for easy cleaning**



**Hands free, no-touch door opening**

SPECS	U.S. (LBS/IN/GAL)	METRIC (KG/CM/L)
Weight	193 lbs	87.5 kg
Height	88.9 in	226 cm
Width	44 in	111.8 cm
Depth	48 in	122 cm
Doorway Width	24.7 in	62.7 cm
Doorway Height	75.5 in	191.8 cm
Tank Capacity	65 gal	246 L

**WATCH VIDEOS  
HERE**



# ECHO RECIRCULATING

## Flush Tank System for the Echo One



The Echo One Recirculating Flush Tank utilizes a low-maintenance, side-discharge bowl design that inhibits the visibility of waste.

The hinged bowl allows for easy service and maintenance. The American-made Bosworth foot pump provides for a hands-free experience – no touching handles to flush.

The dual filter pickup system keeps blockage to a minimum and provides for a clean bowl and improved customer experience.

- ▶ Side discharge bowl
- ▶ Dual filter pickup system
- ▶ American made Bosworth foot pump
- ▶ Stainless steel hardware



*Side discharge bowl*



*Underside Bowl  
Hose Connection*



*American made  
Bosworth foot pump*

**WATCH VIDEOS  
HERE**





# ECHO MAX

## Wheelchair Accessible Portable Restroom

**STRONG. SMART. DURABLE.**



The Echo Max portable restroom offers a spacious, wheelchair-accessible alternative to traditional ADA-compliant restrooms and can also be marketed as a family-sized unit.

For operators, The Echo Max boasts a superior design with a 45 or 70-gallon sumped tank, 4 heavy-duty stainless steel hinges, an integrated floor drainage system for easy cleaning, side and rear forklift access molded into the floor, superior structural strength for longer life, a high-flow ventilation system, a reinforced domed roof with tiedown channels for secure transport, overlapping corner construction for extra durability, 2-strain relief door springs, and Echo series UV Color Protection Technology.

- ▶ **Available 45 or 70-gallon sumped bottom tank**
- ▶ **4-heavy duty stainless steel hinges**
- ▶ **Integrated floor drainage system for easy cleaning**
- ▶ **Side and rear forklift access openings molded into floor**
- ▶ **High flow ventilation system**
- ▶ **Integrated assist grab rails**
- ▶ **2-strain relief door springs**
- ▶ **Structurally reinforced domed roof with tie-down channels for safely and secure transport**
- ▶ **Overlapping corner construction provides superior strength**
- ▶ **Includes the Echo series UV Color Protection Technology**



**All New Handrail Design**



**Available in 45 or 70 gallon SUMPED tanks**



**Domed roof with tie-down channels**



**Rear and side forklift access points**

SPECS	U.S. (LBS/IN/GAL)	METRIC (KG/CM/L)
Weight	260 lbs	118 kg
Height	86.3 in	219.2 cm
Width	66 in	167.6 cm
Depth	63.7 in	161.8 cm
Doorway Width	33.75 in	85.7 cm
Doorway Height	72.5 in	184.2 cm
Tank Capacity	45-70 gal	170-265 L

**WATCH VIDEOS  
HERE**





# ECHO ADA

## ADA-Compliant Portable Restroom

**STRONG. SMART. DURABLE.**



The Echo ADA portable restroom offers a spacious, fully ADA compliant restroom designed for wheelchair users.

For operators, The Echo ADA boasts a superior design with a 45 or 70-gallon sumped tank, 4 heavy-duty stainless steel hinges, an integrated floor drainage system for easy cleaning, side and rear forklift access molded into the floor, superior structural strength for longer life, a high-flow ventilation system, a reinforced domed roof with tiedown channels for secure transport, overlapping corner construction for extra durability, 2-strain relief door springs, and Echo series UV Color Protection Technology.

- ▶ **ADA-compliant pneumatic door closer for ease of use**
- ▶ **4-heavy duty stainless steel hinges**
- ▶ **Available 45 or 70-gallon sumped bottom tank**
- ▶ **Integrated floor drainage system for easy cleaning**
- ▶ **Side and rear forklift access openings molded into floor**
- ▶ **High flow ventilation system**
- ▶ **Integrated assist grab rails**
- ▶ **Structurally reinforced domed roof with tie-down channels for safely and secure transport**
- ▶ **Overlapping corner construction provides superior strength**
- ▶ **Includes the Echo series UV Color Protection Technology**



**All New Handrail Design**



**Available in 45 or 70 gallon SUMPED tanks**



**Domed roof with tie-down channels**



**Rear and side forklift access points**

SPECS	U.S. (LBS/IN/GAL)	METRIC (KG/CM/L)
Weight	290 lbs	132 kg
Height	86.3 in	219.2 cm
Width	66 in	167.6 cm
Depth	89.5 in	227.3 cm
Doorway Width	33.75 in	85.7 cm
Doorway Height	72.5 in	184.2 cm
Tank Capacity	45-70 gal	170-265 L

**WATCH VIDEOS  
HERE**



# ECHO SINKS

Standing, In-Unit & Standing Urinals



## Kros Standing Urinal

Four quadrant outdoor urinal allowing simultaneous use by four men, maximizing venue space, reducing restroom wait times, and keeping portable toilets cleaner overall hygiene.

*page 11*



## Stowaway Standing Hand Wash Station

Compact double sided hand wash station designed to fit inside portable restrooms, featuring lightweight construction, foot pump operation, drainage, and easy transport for jobsites and events.

*page 12*



## OKADA ADA Hand Wash Station

Wheelchair accessible hand wash station with large freshwater capacity, built in towel dispenser, and durable weather resistant design ideal for jobsites events and public spaces.

*page 13*



## Companion

### In-Unit Hand wash Station

Versatile hand wash station series offering twelve fifteen and twenty gallon options, delivering durable all in one hygiene solutions for low medium and high traffic environments.

*page 14*



## Companion Jr.

### In-Unit Hand Wash Station

Compact in unit Hand Wash station featuring lightweight durable construction, enclosed freshwater tank, spacious basin, and boot friendly foot pump access for easy servicing and reliable hygiene.

*page 15*



## Echo Single & Single X2

### In-unit Hand Wash Station

Heavy duty in unit hand wash stations offering single or dual bowl options, large basins, easy maintenance, transport, and hygiene solutions for construction agriculture and events.

*page 16*

# KROS URINAL

A Space Saving, Line Reducing,  
Odor Killing, Men's Urinal



The Kros Urinal offers a revolutionary, lightweight design for large outdoor sanitation needs.

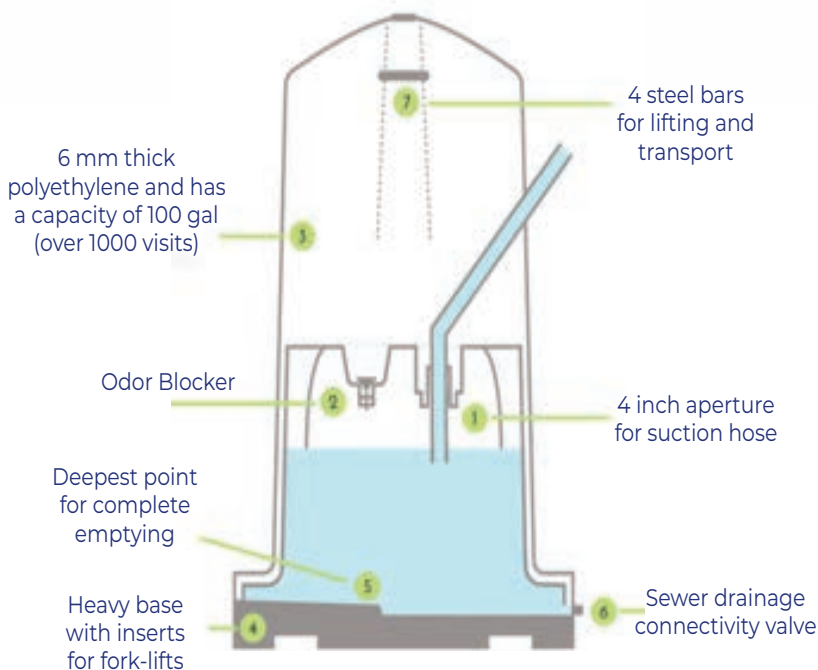
This award-winning innovation features a simple, square structure divided into four separate quadrants, allowing four men to use it simultaneously while maintaining privacy and ample separation.

- ▶ **1) – 4-inch Aperture for Suction Hose**  
*Allows efficient waste removal*
- ▶ **2) – Odor Blocker**  
*Helps contain and reduce unpleasant smells*
- ▶ **3) – 6mm Thick Polyethylene with 100-Gallon Capacity**  
*Durable construction, supports over 1,000 visits*
- ▶ **4) – Heavy Base with Forklift Inserts**  
*Ensures stability and easy transportation*
- ▶ **5) – Deepest Point for Complete Emptying**  
*Maximizes drainage efficiency*
- ▶ **6) – Sewer Drainage Connectivity Valve**  
*Enables direct sewer connection*
- ▶ **7) – 4 Steel Bars for Lifting and Transport**  
*Provides structural support for secure handling*

**TECHNICAL SPECS**  
Dimensions: 78" (H) x 42" (W) x 42"(L)

SPECIFICATION	VALUE
Height	78 in / 198.1 cm
Width	42 in / 106.7 cm
Length	42 in / 106.7 cm
Dry Weight	190 lbs / 86.2 kg
Tank Capacity	100 gal / 378.5 L
Uses Per Station	1000+

**MAXIMIZES VENUE SPACE**  
**REDUCES RESTROOM WAIT TIMES**  
**KEEPS PORTABLE TOILETS CLEANER**



# STOWAWAY

## Doubled-Sided Standing Hand Wash Station



The Stowaway Double-Sided Hand Wash Station is engineered for durability and ease of use, making it ideal for both construction sites and events.

- ▶ **Compact & Transportable**  
*Designed to fit inside a portable restroom for easy transportation and storage.*
- ▶ **Durable & Lightweight**  
*Constructed from sturdy yet lightweight materials for long-lasting performance.*
- ▶ **Efficient Water Drainage**  
*Equipped with both freshwater and graywater drains for seamless operation.*
- ▶ **Reinforced Single-Piece Body**  
*A one-piece outer body enhances durability and reduces potential weak points.*
- ▶ **Boot-Friendly Foot Pump Access**  
*Large foot pump opening accommodates work boots for convenient use in rugged environments.*
- ▶ **Dual Paper Towel Dispensers**  
*Features two dispensers that support 2-fold paper towels for user convenience.*
- ▶ **Easy Freshwater Filling**  
*Includes a 1.25-inch freshwater fill hole for quick and efficient refilling.*
- ▶ **Simple Pump-Out Access**  
*A 3-inch top evacuation port allows for fast and hassle-free pump-out with a vacuum wand.*
- ▶ **Molded-In Hand Holds**  
*Integrated hand grips make it easy to move and position the unit as needed.*



**FITS INSIDE  
FOR EASY  
TRANSPORT**

SPECS	U.S. (LBS/IN/GAL)	METRIC (KG/CM/L)
Counter Height	35.5 in	90.2 cm
Total Height	50 in	127 cm
Width	17.5 in	44.5 cm
Length	28 in	71.1 cm
Weight	65 lbs	29 kg
Freshwater Capacity	24 Gallon	91 L
Graywater Capacity	24 Gallon	91 L

**WATCH VIDEOS  
HERE**





# OKADA

## Wheelchair Accessible Hand Wash Station



The OKADA Hand Wash Station is designed for easy wheelchair accessibility and convenience, offering a reliable hand washing solution for any setting.

With a 24-gallon freshwater capacity, it provides ample water for extended use. The built-in towel dispenser ensures a complete and hygienic hand washing experience.

Durable and weather-resistant, the OKADA is a practical choice for job sites, events, and public spaces where accessibility and sanitation are essential.

SPECS	U.S. (LBS/IN/GAL)	METRIC (KG/CM/L)
Width	24 in	61 cm
Depth	37 in	94 cm
Height	49.5 in	126 cm
Freshwater Capacity	24 gal	91 L
Weight	90 lbs	28 kg
Included Accessories	1 Towel Dispenser	1 Towel Dispenser



*Front side with towel dispenser*



*Backside with handles*



*Roomy basin*



*Hands free lever pump*



# COMPANION

## In-Unit Hand Wash Station

The Companion Hand Wash Station Series is a versatile and durable sanitation solution designed to meet the demands of any environment where hand hygiene is essential. This all-in-one lineup includes the Companion #12, #15, and #20, offering a range of capacities and features to suit different needs.

**Companion #12 (12 Gallon)** – Compact and efficient, ideal for smaller spaces and low-traffic areas.

**Companion #15 (15 Gallon)** – A balanced solution with increased capacity for medium-traffic locations.

**Companion #20 (20 Gallon)** – High-capacity model built for demanding environments and extended use.

- ▶ **In-Unit Hand Wash Station**
- ▶ **3 sizes available (12,15, or 20 gal)**
- ▶ **Robust, lightweight construction**
- ▶ **Single piece outer body for added durability**
- ▶ **Enclosed fresh water tank**
- ▶ **Large opening at foot pump to accommodate work boots**
- ▶ **Basin accommodates forearm**
- ▶ **Fill & evacuation ports for ease in servicing**

SPEC	#12	#15	#20
Height	45 in	45 IN	45 in
Width	16 in	16 IN	16 in
Depth	10 in	10 IN	14 in
Weight	18 lbs	20 LBS	23 lbs
Capacity	12 gal	15 GAL	20 gal



**WATCH VIDEOS  
HERE**



## BACKPACK

### For Companion Sink

The BACKPACK holding tank is a multipurpose sink option that quickly converts our Companion #12 & #15 single hand-wash stations into a fully self-contained unit that is very portable and easy to transport or reposition on the go!

*Optional wheels & handle kit available.*



# COMPANION JR.

## In-Unit Hand Wash Station

Designed for durability and convenience, the In-Unit Hand Wash Station features a robust yet lightweight single-piece outer body for long-lasting performance.

Its enclosed fresh water tank ensures cleanliness, while the spacious basin allows for forearm washing. The large foot pump opening accommodates work boots, and easy-access fill and evacuation ports simplify servicing.



- ▶ **In-Unit Hand Wash Station**
- ▶ **Robust, lightweight construction**
- ▶ **Single piece outer body for added durability**
- ▶ **Enclosed fresh water tank**
- ▶ **Large opening at foot pump to accommodate work boots**
- ▶ **Basin accommodates forearm**
- ▶ **Fill & evacuation ports for ease in servicing**

SPECIFICATION	U.S. (IN/LBS/GAL)	METRIC (CM/KG/L)
Total Height	45 in	114.3 CM
Width	19 in	48.3 CM
Depth	9 in	22.9 CM
Weight	16 lbs	7.3 KG
Tank Capacity	12 gal	45.4 L

# SINGLE & SINGLE X2

## In-Unit and Stand-Alone Hand Wash Station



**WATCH VIDEOS  
HERE**



This heavy-duty in-unit hand wash station features a large basin for hand and forearm washing. Its two-piece design makes maintenance easy, saving time and money. The basin allows for quick freshwater tank inspection and cleaning, and the back splash supports optional soap dispensers.

The Echo Single x2 combines two Echo Single units back to back, creating a free-standing hand wash station. One side holds freshwater while the other collects gray water, offering an economical two-bowl sink. Designed for easy transport, it fits into a standard restroom.

Ideal for construction, agriculture, and events.

- ▶ **Vandal proof molded in spigot**
- ▶ **Molded-in fill indicators.**
- ▶ **Removable basin for filling, inspecting and cleaning**
- ▶ **¼ turn fresh water drain plug**
- ▶ **Quick connect easy change Foot Pump**
- ▶ **Fits in most standard restrooms**
- ▶ **Can be mounted on either side wall of restroom**

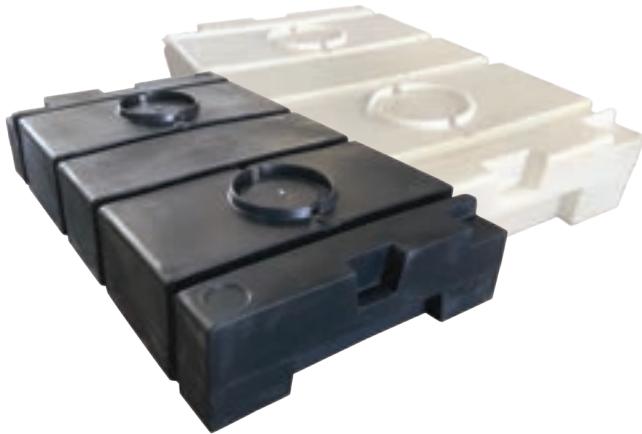
SPECIFICATION	ECHO SINGLE	ECHO SINGLE X2
Height	53 in (135 cm)	63.25 in (161 cm)
Width	19.5 in (50 cm)	22 in (56 cm)
Depth	9 in (23 cm)	20 in (50 cm)
Weight	17 lbs (7.7 kg)	42 lbs (19 kg)
Fresh Water Capacity	12.75 gal (48.3 L)	12.75 gal (48.3 L)
Gray Water Capacity	N/A	12.75 gal (48.3 L)
Dispenses/Pumps	777	777





# J&J PLASTICS

Holding Tanks, Containment Trays  
& Portable Restroom Accessories



## **Echo ADA Portable Restroom**

Heavy duty impact resistant holding tanks with low profile stackable design, molded handholds, and multiple ports for flexible waste storage at job sites events and facilities

*page 18*



## **Echo ADA Portable Restroom**

Durable containment trays designed to assist with secondary containment, helping keep worksites clean compliant and safe across construction sites events and agricultural environments

*page 19*



## **Portable Restroom Accessories and Add Ons**

Essential portable restroom accessories and add ons that enhance functionality comfort and service efficiency while allowing operators to customize units for job sites events and user needs

*page 20*



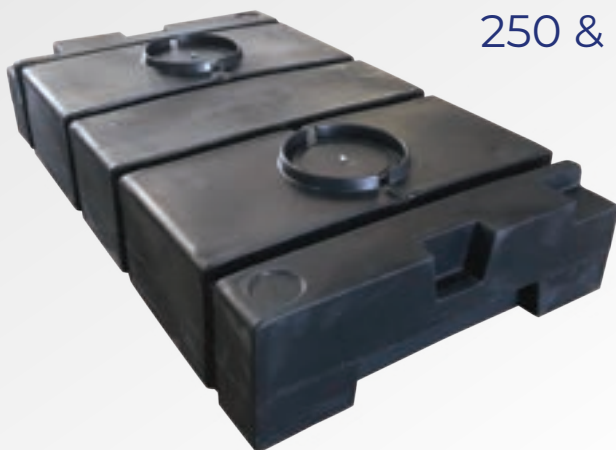
## **J Lights Portable Restroom Lights**

Solar powered LED restroom lights with motion sensing activation at night, rechargeable batteries, and bright illumination options designed to improve visibility safety and user experience

*page 20*

# HOLDING TANKS

250 & 300 Gallon



Our heavy-duty, impact-resistant holding tanks are built for durability and efficiency. With a low-profile, stackable design, molded-in handholds, and multiple recessed ports for flexible configurations, they're perfect for waste storage at job sites, events, and more. Easy to handle, secure, and built to last.

SPECIFICATION	250-GALLON	300-GALLON
Width	84"	84"
Depth	48"	48"
Height	16"	20"
Weight	100 lbs	108 lbs

- ▶ **Heavy-duty construction for durability and longevity**
- ▶ **Low-profile design for easy storage and placement**
- ▶ **Molded-in handholds for convenient handling and positioning**
- ▶ **Stackable design for efficient storage and transport**
- ▶ **Dual 10" covers for quick and easy pump access**
- ▶ **Six recessed 3" ports**  
*(two ready for use, four sealed for optional configurations)*
- ▶ **3" NPT connection for secure fittings**
- ▶ **Available in Black & Translucent**



# CONTAINMENT TRAY

For Portable Toilets & Sinks



For Standard  
Portable Restrooms

Keep worksites clean and compliant with our durable containment trays, designed to assist with secondary containment. Built with a dense, high-strength base, these trays maintain their shape and ensure long-lasting performance in the field.

Ideal for construction sites, outdoor events, and agricultural use, our containment trays are a simple, effective solution for maintaining cleaner, safer environments.

- ▶ **Reliable Containment**  
*Designed for secondary containment, reducing ground contamination.*
- ▶ **Heavy-Duty Construction**  
*Dense base provides durability and extended lifespan.*
- ▶ **Great Fit for Standard Units**  
*Engineered to fit standard portable restroom bases.*
- ▶ **Stackable design**  
*Stack up to 50 trays for compact storage and transport.*
- ▶ **Effortless Transport**  
*Easily carried inside portable restrooms for convenience.*
- ▶ **Quick Pump-Out Access**  
*Integrated access points on both ends for easy servicing.*



For Standard Portable Sinks

CONTAINMENT TRAY	U.S.	METRIC
For Toilets	44 in x 48 in	111.8 cm x 121.9 cm
For Sinks	18 in x 18 in	45.7 cm x 45.7 cm



# PORTABLE RESTROOM ACCESSORIES

## J-LIGHTS

### SOLAR POWERED MOTION SENSOR LIGHT

*The Perfect Light to Illuminate Your Portable Toilet*



#### J-LIGHT 45

- 5 Super bright, cool white LED's emitting 45 Lumens
- 3.2V 600mAh Li-ion rechargeable battery
- Requires 1.5" hole (36 mm)



#### J-LIGHT 65

- 10 Super bright, cool white LED's emitting 65 Lumens
- 3.2V 1500mAh Li-ion rechargeable battery
- Requires 2" hole (50 mm)



#### 2-ROLL TOILET PAPER GUARD

Rod included



#### 3-ROLL TOILET PAPER GUARD

Rod included



#### TOWEL DISPENSER

For "C" or Multi-fold towels



#### OVER TANK URINAL



#### Paper Seat Cover Dispenser



#### WALL URINAL



#### FOOT PUMP

3/8" quick connect ports  
Heavy-duty high quality foot pump  
Made in USA



#### FOOT PUMP

1/2" hose barb ports  
Heavy-duty high quality foot pump  
Made in USA



#### PAD LOCK

For use with toilet paper rod.



# PORTABLE TOILET **DEODORIZERS**

## *Portion Control & Liquid Strength*



No leak squeeze bottle prefilled with Truex Liquid Power delivering blue color odor control and waste breakdown.

**page 22**



Advanced water soluble deodorizer packets delivering long lasting fragrance deep blue color and convenient portion control.

**page 23**



Original water soluble deodorizer packets with self mixing action stronger dye profile and trusted odor control.

**page 24**



Effervescent self mixing deodorizer tablets with stronger dye dissolving in brine ideal for cold weather.

**page 25**



Natural enzyme based deodorizer tablets providing portion control blue color fragrance and waste breakdown performance.

**page 26**



Natural enzyme based water soluble deodorizer packets delivering portion control blue color and fragrance performance.

**page 26**



Non formaldehyde liquid deodorizer delivering long lasting fragrance blue color while breaking down waste reducing mounding in portable toilets.

**page 27**



Formaldehyde strength liquid deodorizer providing extreme odor control long lasting fragrance and deep blue color performance.

**page 28**



Natural liquid deodorizer controlling odors while breaking down waste reducing mounding and helping clean holding tanks.

**page 29**

The **Safest, Easiest** Way To **Deodorize** Portable Toilets®

# TRUEX

## SQUEEZE BOTTLE

### Holding Tank Deodorizer

The Truex Squeeze Bottle is a convenient, no-leak, easy-to-use 1-liter bottle filled with our non-formaldehyde Truex Liquid Power portable toilet deodorizer. Designed to boost productivity and minimize spillage, it helps prevent messes that can be both costly and time-consuming.

With Truex Liquid Power, the Truex Squeeze Bottle delivers a long-lasting deep blue color, advanced time-released odor-crushing technology, and breaks down paper and waste to reduce mounding for a cleaner, more efficient portable toilet experience.

- ▶ **Convenient 1-liter bottle filled with Truex Liquid Power deodorizer and all its benefits**
- ▶ **Non-formaldehyde formula**
- ▶ **Reduces costly spills for a cleaner, more efficient experience**
- ▶ **Speeds up productivity with easy, mess-free application**
- ▶ **Reusable bottles for added convenience and sustainability**



### EASY TO USE



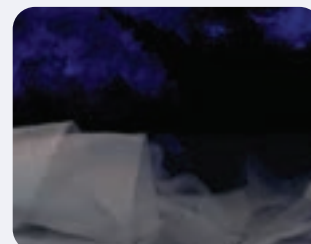
*Pour 5 gallons of water into the holding tank*



*Open the easy to use, no leak cap*



*Squeeze the appropriate amount into the tank*



*Enjoy long lasting deep blue color*

### Available in these fragrances



**Mulberry**



**Cherry**



**Power Fresh**



**Melon Fresh**

**WATCH VIDEOS  
HERE**



The **Safest, Easiest** Way To **Deodorize** Portable Toilets®



# TRUEX

## POWER PACKET

### Holding Tank Deodorizer

Truex Power Packets are a portion control deodorizer in the form of a water soluble packet. A convenient drop-n-go deodorizer that provides long-lasting deep blue color and fragrance.

Specifically formulated to eliminate odors in portable toilets, buses, boats, trains, RV's, holding tanks, recirculating toilets, and any other self-contained toilets.

**WATCH VIDEOS  
HERE**



#### **Water Soluble Portion Control**

A powerful, water-soluble packet designed for easy to use portion control, providing a no-mess, no spill experience.



#### **Strong Fragrance**

Packed with our exclusive, strong fragrances, delivering a bold, long-lasting scent you won't find anywhere else.



#### **Non-Formaldehyde**

Our packets are formulated with a non-formaldehyde formula, making them a safer, more environmentally friendly choice without compromising performance.



#### **Long-Lasting, Deep Blue Color**

Long-lasting, deep blue color that keeps customers from ever being distracted, ensuring a fresh, clean impression every time.



#### **Breaks Down Paper & Waste**

Powerful ingredients that help break down paper and waste, reducing mounding in the holding tank for a cleaner unit.



#### **The Right Strength for Your Needs**

Available in a range of strengths to suit any need—from single-use events to extreme heat conditions on long-term sites.

### EASY TO USE



*Toss the packet  
in the holding tank*



*Pour 5 gallons of water  
into the holding tank*



*Once dissolve, enjoy long lasting  
deep blue color*

### AVAILABLE STRENGTH

#### **PLATINUM**

**MAXIMUM STRENGTH**  
*Most Powerful Packet*

60 packets per bag  
240 packets per case  
4 bags per case

#### **GOLD**

**SUPER STRENGTH**  
*High Temp & Traffic*

60 packets per bag  
240 packets per case  
4 bags per case

#### **EXTREME**

**EXTRA STRENGTH**  
*Moderate Heat & Traffic*

80 packets per bag  
320 packets per case  
4 bags per case

#### **SILVER**

**MODERATE STRENGTH**  
*Great for Events!*

80 packets per bag  
320 packets per case  
4 bags per case

#### **BRONZE**

*Great for Events!*

100 packets per bag  
400 packets per case  
4 bags per case

*Call for available fragrances*





The **Safest, Easiest** Way To **Deodorize** Portable Toilets®



# PROPAXX

## SELF-MIXING PACKET

### Holding Tank Deodorizer

Propaxx Packets are a portion control deodorizer in the form of a water soluble packet. A convenient drop-n-go deodorizer that provides long-lasting deep blue color and fragrance.

Specifically formulated to eliminate odors in portable toilets, buses, boats, trains, RV's, holding tanks, recirculating toilets, and any other self-contained toilets.

**WATCH VIDEOS  
HERE**



#### **Water Soluble, Self Mixing**

A powerful, water soluble that is also a **self-mixing packet** designed for easy to use portion control, providing a no-mess, no spill experience for your portable toilets.



#### **Strong Fragrance**

Our packets are packed with our exclusive, strong fragrances, delivering a bold, long-lasting scent you won't find anywhere else.



#### **Non-Formaldehyde**

Our packets are formulated with a non-formaldehyde formula, making them a safer, more environmentally friendly choice without compromising performance.



#### **Long-Lasting, Deep Blue Color**

Our deodorizer packets provide a long-lasting, deep blue color that ensures your customers a fresh, clean experience every time..



#### **Breaks Down Paper & Waste**

Powerful ingredients that help break down paper and waste, reducing mounding in the holding tank for a cleaner unit.



#### **The Right Strength for Your Needs**

Available in a range of strengths to suit any need—from single-use events to extreme heat conditions on long-term sites.

## EASY TO USE



*Toss the packet  
in the holding tank*



*Pour 5 gallons of water  
into the holding tank*



*Once dissolve, enjoy long lasting  
deep blue color*

## AVAILABLE STRENGTH

### **GOLD**

#### **SUPER STRENGTH**

*High Temperatures & Traffic*

60 packets per bag  
240 packets per case  
4 bags per case

### **EXTREME**

#### **EXTRA STRENGTH**

*Moderate Heat & Traffic*

80 packets per bag  
320 packets per case  
4 bags per case

### **SILVER**

#### **MODERATE STRENGTH**

*Great for Events!*

80 packets per bag  
320 packets per case  
4 bags per case

*Call for available fragrances*





The **Safest, Easiest** Way To **Deodorize** Portable Toilets®



# EVERPRO SELF-MIXING TABLET

## Holding Tank Deodorizer

Everpro Elite Tablets are a portion control deodorizer in the form of a self mixing, effervescent tablet. A convenient drop-n-go deodorizer that provides long-lasting deep blue color and fragrance.

Specifically formulated to eliminate odors in portable toilets, buses, boats, trains, RV's, holding tanks, recirculating toilets, and any other self-contained toilets. *It even dissolves in brine water!*

**WATCH VIDEOS  
HERE**



### Self-Mixing, Effervescent Action

A powerful, *self mixing, effervescent* tablet designed for easy to use portion control, providing a no-mess, no spill experience for your portable toilets



### Strong Fragrance

Our tablets are packed with our exclusive, strong fragrances, delivering a bold, long-lasting scent you won't find anywhere else.



### Non-Formaldehyde

Our tablets are formulated with a non-formaldehyde formula, making them a safer, more environmentally friendly choice without compromising performance.



### Long-Lasting, Deep Blue Color

Our deodorizer tablets provide a long-lasting, deep blue color that keeps your customers from ever being distracted, ensuring a fresh, clean impression every time.



### Breaks Down Paper & Waste

Formulated with powerful ingredients that help break down paper and waste, reducing mounding in the holding tank for a cleaner, more efficient portable toilet.



### Dissolves In Brine

Our Effervescent Deodorizer Tablets dissolve *easily in brine water*, making them a reliable solution for PROs servicing portable restrooms in cold climates..

## EASY TO USE



**Toss the tablet  
in the holding tank**



**Pour 5 gallons of water  
into the holding tank**



**Once dissolve, enjoy long lasting  
deep blue color**

## AVAILABLE STRENGTH

### GOLD

**SUPER STRENGTH**  
**High Temperatures & Traffic**

45 tablets per bag  
180 tablets per case  
4 bags per case

### EXTREME

**EXTRA STRENGTH**  
**Moderate Heat & Traffic**

50 tablets per bag  
200 tablets per case  
4 bags per case

### SILVER

**MODERATE STRENGTH**  
**Great for Events!**

55 tablets per bag  
220 tablets per case  
4 bags per case

### BRONZE

**Great for Events!**

75 tablets per bag  
300 tablets per case  
4 bags per case

Call for available fragrances



## EVERGREEN

### ENZYME-POWERED PORTION CONTROL

#### Holding Tank Deodorizer



### EVERGREEN PACKETS

Evergreen Elite Packets are a natural portion control deodorizer in the form of a water soluble packet. A convenient drop-n-go deodorizer that provides long-lasting deep blue color and fragrance. Specifically formulated to eliminate odors in portable toilets, buses, boats, trains, RV's, holding tanks, recirculating toilets, and any other self-contained toilets.

- ▶ Fast Acting, Highly Effective
- ▶ Breaks Down Paper & Waste
- ▶ Non-Staining Color
- ▶ Quick Dissolving
- ▶ Works In All Climates
- ▶ Biodegradable

#### **GOLD**

##### **EXTREME HEAT & TRAFFIC**

60 packets per bag  
240 packets per case  
4 bags per case



### EVERGREEN TABLETS

Evergreen Elite Tablets are a natural portion control deodorizer in the form of a water soluble packet. A convenient drop-n-go deodorizer that provides long-lasting deep blue color and fragrance. Specifically formulated to eliminate odors in portable toilets, buses, boats, trains, RV's, holding tanks, recirculating toilets, and any other self-contained toilets.

- ▶ Fast, Effervescent Mixing
- ▶ water solubly wrapped
- ▶ Non-Staining Color
- ▶ Works In All Climates
- ▶ Biodegradable
- ▶ Breaks Down Paper & Waste

#### **GOLD**

##### **EXTREME HEAT & TRAFFIC**

60 tablets per bag  
180 tablets per case  
4 bags per case

Call for available fragrances

# The **Safest, Easiest** Way To **Deodorize** Portable Toilets®



## **TRUEX** **LIQUID POWER** Holding Tank Liquid Deodorizer

A non-formaldehyde liquid deodorizer designed for direct use in holding tanks, providing odor-crushing protection with a superior, long-lasting fragrance and deep blue color. Effectively breaks down paper and waste to reduce mounding, prevents scale buildup, and ensures guaranteed performance for reliable and efficient portable toilet maintenance.

**WATCH VIDEOS  
HERE**



### **Superior Odor Control**

Neutralizes even the toughest odors, providing continuous freshness in any environment.



### **Powerful Fragrance**

Formulated with strong, lasting fragrances, it effectively eliminates odors and keeps units smelling fresh.



### **Non-Formaldehyde formula**

Designed for direct use in holding tanks, this formula provides odor-crushing protection with a long-lasting fragrance and deep blue color for a fresher, cleaner experience.



### **Long-Lasting, Deep Blue Color**

Our liquid deodorizer provides a long-lasting, deep blue color that keeps your customers from ever being distracted, ensuring a fresh, clean impression every time.



### **Breaks Down Paper & Waste**

Formulated with powerful ingredients that help break down paper and waste, reducing mounding in the holding tank for a cleaner, more efficient portable toilet.



### **The Right Strength for Your Needs**

Available in multiple strengths, our liquid deodorizer works for short-term events and long-term job sites, even in extreme heat.

## **EASY TO USE**



*Pour 5 gallons of water  
into the holding tank*



*Charge the holding tank with Trueex  
Liquid Power*



*Enjoy instant  
long lasting deep blue color*

## **AVAILABLE STRENGTH**

### **LP 575**

**MAXIMUM STRENGTH**  
*For the most demanding,  
extreme heat & usage*

1/2-2 oz. (~15-60 ml.)  
per service

### **LP 555**

**SUPER CONCENTRATE**  
*Perfect for high  
traffic & extreme heat*

1-2 oz. (~30-60 ml.)  
per service

### **LP 545**

**ECO SUPER CON**  
*High traffic &  
extreme heat*

1-2 oz. (~30-60 ml.)  
per service

### **LP 535**

**POWERFUL CONCENTRATE**  
*Odor control protection  
for moderate heat*

1-3 oz. (~30-90 ml.)  
per service

### **LP 525**

**COST EFFECTIVE  
CONCENTRATE**  
*Perfect alternative  
for events*

2-4 oz. (~60-120 ml.)  
per service

### **LP 515**

**MOST POWERFUL RTU**  
*High performance RTU  
odor control*

2-4 oz. (~60-120 ml.)  
per service



# Formaldehyde Strength Deodorizer for Portable Toilets



## DESTROYER

### FORMALDEHYDE STRENGTH Holding Tank Liquid Deodorizer

A formaldehyde-strength liquid deodorizer designed for the toughest jobs, providing powerful odor-crushing protection with a superior, long-lasting fragrance and deep blue color.

Effectively breaks down paper and waste to reduce mounding, prevents scale buildup, and ensures guaranteed performance for reliable and efficient portable toilet maintenance.

Available in 1 gal, 5 gal, 7 gal, 55 gal, and 275 gal containers



#### Long-Lasting, Deep Blue Color

Formaldehyde strength liquid deodorizer provides long-lasting, deep blue color that keeps your customers from ever being distracted, ensuring a fresh, clean impression every time.



#### Powerful Fragrance

Formulated with our exclusive, strong fragrances, delivering a bold, long-lasting scent you won't find anywhere else.



#### Breaks Down Paper & Waste

Formulated with powerful ingredients that help break down paper and waste, reducing mounding in the holding tank for a cleaner, more efficient portable toilet.

### EASY TO USE



*Pour 5 gallons of water into the holding tank*



*Charge the holding tank with Truex Liquid Power*



*Enjoy instant long lasting deep blue color*

### AVAILABLE STRENGTH

#### SX-950

##### PREMIUM FORMULA

*For the most demanding, extreme heat & usage*

*1-3 oz. per service*

#### SX-850

##### SUPER STRENGTH

*Perfect for extreme heat & traffic conditions*

*2-6 oz. per service*

#### SX-721

##### POWERFUL BLEND

*For high/moderate heat & traffic condition*

*2-8 oz. per service*

#### SX-300

##### READY-TO-USE FORMULA

*RTU Formula for moderate heat & traffic conditions*

*4-10 oz. per service*

*Available in all J&J's exclusive fragrances*





# The **Safest, Easiest** Way To **Deodorize** Portable Toilets®



## **EVERGREEN** **ENZYME-POWERED** **LIQUID DEODORIZER**

Evergreen Liquid Deodorizer uses advanced ingredients to control odor naturally while breaking down paper and waste to reduce mounding and clean the holding tank.

This fast-acting, all-natural formula neutralizes smells quickly without harsh chemicals. Engineered for versatility, it features a non-staining color and maintains peak performance across all climates, ensuring reliability in extreme heat or cold.

**Fully biodegradable and safe for waste treatment plants, it is an environmentally responsible choice that is gentle on the planet but tough on odors.**

Available in 1, 5, 7, 55, and 275-gallon containers.



### **All Natural Odor Control**

Neutralizes even the toughest odors, providing continuous freshness in any environment.



### **Fast Acting, Highly Effective**

Formulated with strong, lasting fragrances, it effectively eliminates odors and keeps units smelling fresh.



### **Non-Formaldehyde formula**

Designed for direct use in holding tanks, this formula provides odor-crushing protection with a long-lasting fragrance and deep blue color for a fresher, cleaner experience.



### **Long-Lasting, Deep Blue Color**

Our liquid deodorizer provides a long-lasting, deep blue color that keeps your customers from ever being distracted, ensuring a fresh, clean impression every time.



### **Breaks Down Paper & Waste**

Formulated with powerful ingredients that help break down paper and waste, reducing mounding in the holding tank for a cleaner, more efficient portable toilet.



### **The Right Strength for Your Needs**

Available in multiple strengths, our liquid deodorizer works for short-term events and long-term job sites, even in extreme heat.

## **EASY TO USE**



*Pour 5 gallons of water into the holding tank*



*Charge the holding tank with Truex Liquid Power*



*Enjoy instant long lasting deep blue color*

## **EG ENZYME FORMULA**

### **STRONG, HIGHLY EFFECTIVE PERFORMANCE**

*For high usage & extreme conditions*

*12-4 oz (~60-120 ml.) per service*

*Available in all J&J's exclusive fragrances*



# CLEANERS, DEGREASERS & FRAGRANCE ENHANCERS



## Fragrance Enhancers

Fragrance enhancers provide long lasting freshness control odors and improve restroom environments across portable restrooms restroom trailers and sanitation equipment.

*page 32-33*



## Graffiti Removers

Powerful graffiti removers that cling to surfaces, cutting through baked in markings fast while reducing scrubbing and restoring clean interiors.

*page 35*



## Urinal Cleaners

Acidic and alkaline urinal cleaners remove urine scale calcium buildup mold and mildew while improving cleanliness odor control efficiency operations.

*page 34*



## All-Purpose Cleaners

Professional cleaning solutions designed to degrease deodorize sanitize and restore portable restrooms trailers fleets and equipment for efficient maintenance operations.

*page 36*



## Restroom Trailer Cleaners

Specialized restroom trailer cleaners delivering residue free cleaning odor control and fresh fragrance to maintain premium interiors and professional presentation.

*page 37*

# FRAGRANCES

We source the world for the most extensive lines of oils and raw materials allowing us to create and manufacture the strongest, longest lasting deodorizers at the lowest cost in the industry.



**Baby Powder**



**Black Glacier**



**Bubble Gum**



**Cherry**



**Cinnamon Burst**



**Citronella Plus**



**Citrus Spice**



**Coconilla**



**Flower Power**



**Fresh Blossom**



**Fresh & Clean**



**Coco Mint**



**Green Apple**



**Hawaiian Blossom**



**Lemon Fresh**



**Mango**



**Melon Fresh**



**Mountain Fresh**



**Mulberry**



**Peppermint**



**Power Fresh**



**Spice**



**Spicy Cherry**



**Spicy Cinnamon**



**Spring Burst**



**Summer Linen**



**Sun Burst**



**Super Berry**



**Tahiti Breeze**



**Tahiti Coconut**



**Tangerine**

*Other J&J proprietary fragrances available*

**ROTATE FRAGRANCE OFTEN TO PREVENT FRAGRANCE FATIGUE**



# J-SPRAY XT

## Washdown Solution & Fragrance Enhancing Spray

J-Spray XT is a dual-purpose wash down cleaner and fragrance enhancing spray designed specifically for portable restrooms and service truck water tanks. This versatile 3-in-1 solution cleans, deodorizes, and freshens, helping portable restroom operators maintain a cleaner, better-smelling unit with less effort.

For every 100 gallons (~375 liters) of fresh water, add 1-2 oz (~30-60 ml) of J-Spray XT. Use as a wash down solution for general restroom cleaning and to supplement deodorizer performance in the holding tank.

**WATCH VIDEOS  
HERE**



**Available in:**

1 Qt. (2 Qt. Min.), Qt. Case (12 Qt bottles per case), 1 Gal, 4x1 Gal Case, 5 Gal & 55 Gal

## 3-IN-1 MULTIPURPOSE PRODUCT

### Fragrance Enhancer

As a powerful portable restroom fragrance enhancer, J-Spray XT delivers immediate freshness with a quick spritz around restroom walls, behind the seat, and in the urinal. The long-lasting fragrance spray helps add an extra kick of fragrance to your portable restrooms.

### Washdown Cleaner

When mixed with water, J-Spray XT becomes an effective wash down cleaning solution with light sudsing action. It helps clean interior surfaces during a routine service while adding extra fragrance at the same time, leaving behind a clean restroom and a pleasant, lingering fragrance after every wash.

### Freshens Water Tank On Truck

J-Spray XT can also be added to service trucks' fresh water tanks to keep fresh water smelling clean while supporting wall cleaning, deodorizing, and odor control during wash downs, making it an excellent all-around maintenance product.

## PREMIUM FRAGRANCES



Bubble Gum



Cherry



Citronella Plus



Coconilla



Flower Power



Fresh Blossom



Fresh & Clean



Green Apple



Lemon Fresh



Mango



Mountain Fresh



Mulberry



Peppermint



Spice



Spicy Cinnamon



Spring Burst



Summer Linen



Sun Burst



Super Berry



Tahiti Breeze



Tangerine

## PAIRS PERFECT WITH:

### Long Handle Bristle Brush



Pair any of our long handle brushes when using J-Spray XT as a washdown solution

### Quart Bottles with Heavy Duty Sprayer



Our quart bottles & triggers are a perfect addition to your J-Spray XT purchase



# J-DISK

## Fragrance Enhancing Disks

J-Disks are 24 hour fragrance enhancing disks designed to provide continuous added fragrance inside portable toilets and restroom units. Once placed, they release long lasting fragrance that helps keep restrooms smelling fresh between services.

Easy to use and highly versatile, J-Disks can be placed behind the vent stack, on the toilet paper holder, inside air vents, or along the side of the tank. Their simple placement and reliable performance make J-Disks an effective solution for consistent fragrance enhancement in portable sanitation environments.

### AVAILABLE STRENGTH

#### ● EXTREME

**LONG-LASTING FRAGRANCE  
UP TO 28 DAYS!**

200 disks per bag  
1000 disks per case  
5 bags per case

#### ● GOLD

**LONG-LASTING FRAGRANCE  
UP TO 30 DAYS!**

100 disks per bag  
500 disks per case  
5 bags per case

#### ● SILVER

**LONG-LASTING FRAGRANCE  
UP TO 21 DAYS!**

250 disks per bag  
1500 disks per case  
5 bags per case

#### J-HOOK

100 adhesive hooks per bag



**24 SCREENS  
PER BAG**

**WATCH  
VIDEOS  
HERE**



# J-SCREENS

## Fragrance Enhancing Screens

J-Screens are fragrance urinal screens designed to enhance odor control and maintain a cleaner, fresher restroom environment. They act as an effective fragrance enhancer for the urinal, releasing consistent fragrance while helping reduce splash and improve overall cleanliness.

VOC compliant and meeting LEED sustainable criteria, J Screens are approved for use in all 50 states and are available in multiple fragrance options to suit operator preferences. Easy to install and long lasting, J-Screens provide dependable performance for portable restrooms and restroom trailers alike.



### Available in 3 or 4 oz Blocks

144 Blocks per case / 12x12 count boxes  
Individually wrapped

# URINAL BLOCKS

## Cherry Scented Urinal Blocks

Para Urinal Blocks are designed to deodorize and help clean urinals while providing reliable, long lasting odor control. Their air activated para formula gradually releases a pleasant cherry fragrance, helping restrooms remain fresh over time.

Easy to use and effective, simply place one urinal block in the center of the restroom urinal to add fragrance and assist in maintaining cleanliness. Para Urinal Blocks are a simple, dependable solution for ongoing urinal odor control in portable restrooms and restroom trailers.

The **Perfect Urinal Cleaner** for your **Portable Toilets** in the **Field and the Yard!**



## URINX-II

### Alkaline General Purpose Urinal Cleaner

Urinx-II is a powerful alkaline urinal cleaner engineered to tackle one of the most common challenges in portable restrooms, calcium buildup caused by urine. Its advanced formula dissolves calcium deposits on contact and, with regular use, helps reduce future scale buildup, keeping restrooms cleaner for longer.

Designed specifically for portable restroom maintenance, Urinx-II goes beyond urinals. It also functions as a versatile general-purpose cleaner, making it highly effective at removing mold, mildew, and organic buildup from interior restroom surfaces.

**Available in:**

1 Qt. (2 Qt. Min.), Qt. Case (12 Qt bottles per case), 1 Gal , 4x1 Gal Case, 5 Gal & 55 Gal



## URINAL CLEANER

### Low pH Urinal Cleaner

Our low pH urinal cleaner is a powerful acidic urinal cleaner that is specifically formulated to remove calcium deposits caused by urine and, with regular use, help reduce ongoing calcium buildup in portable restrooms. It works quickly and effectively to restore urinals and surrounding surfaces to a cleaner, more sanitary condition.

Beyond surface cleaning, this product also plays an important role in waste management performance. By lowering the pH of the waste, it helps keep contents within a range acceptable to waste treatment plants, supporting smoother downstream processing and compliance.

**Available in:**

1 Qt. (2 Qt. Min.), Qt. Case (12 Qt bottles per case), 1 Gal , 4x1 Gal Case, 5 Gal & 55 Gal

### EASY TO USE



*Spray into the urinal  
or where scale is  
built up*



*Spray onto the floor  
where scale can  
build up*



*Rinse off and brush  
if needed for  
tough stains*



*Regular use will help  
reduce future scale  
buildup*

**WATCH VIDEOS  
HERE**



The **Perfect Graffiti Removers** for your **Portable Toilets** in the **Field and the Yard!**



**WATCH  
VIDEOS  
HERE**



# ART BLASTER PRO

## Graffiti Remover, Cleaner & Protector

**Art Blaster PRO's new formula removes markers, paint, pen, and many more substances QUICKER & EASIER THAN EVER!** As Art Blaster PRO removes offending graffiti, it furnishes a protective coating. The biodegradable coating acts as a protective sheen. It renews the finish to protect your portable restroom from offensive new graffiti. Unlike other cleaners on the market, Art Blaster PRO is both environmentally and user friendly.

J&J's Art Blaster PRO is specially formulated for use on Plastic & Fiberglass Portable Toilets, but can be safely used on unpainted metals and most plastics.

**Art Blaster Sponge:** Use our 50% STRONGER double-sided sponge along with any of our graffiti removers to maximize cleaning power and remove stubborn graffiti including pencil!

### Available in:

**1 Qt.** (2 Qt. Min.) 2 sponges & 1 trigger • **12 x 1 Qt. Case** 12 sponges & 3 triggers  
**1 Gal.** with 4 sponges • **4 x 1 Gal.** with 12 sponges • **5 Gal.** with 18 sponges • **55 Gal.** with 60 sponges



**WATCH  
VIDEOS  
HERE**



# GRAFFITI BLASTER

## Graffiti Remover, Cleaner & Protector

Graffiti Blaster is a high-performance graffiti remover specifically formulated for portable toilets and restroom interiors. Its gel-like formula clings to vertical sidewalls, allowing the active ingredients to penetrate and break down even the toughest, baked-in graffiti fast and with minimal scrubbing.

Designed for portable restroom operators, Graffiti Blaster makes graffiti removal quick, easy, and efficient, helping restore units to a clean, professional appearance between services. Unlike thin liquid cleaners that drip and run, this thick, slow-drip gel stays where you spray, maximizing dwell time and cleaning power.

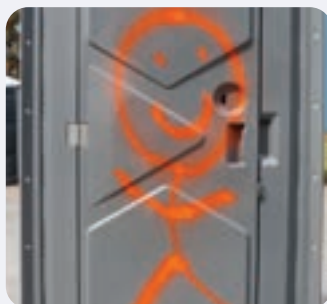
### Available in:

**1 Qt.** (2 Qt. Min.) 2 sponges & 1 trigger • **12 x 1 Qt. Case** 12 sponges & 3 triggers  
**1 Gal.** with 4 sponges • **4 x 1 Gal.** with 12 sponges

### EASY TO USE



*Spray onto the graffiti sprayed area*



*For spray paint, allow to penetrate for 1 minute*



*Wipe off graffiti with sponge or a dry cloth*



*Cleans even the toughest graffiti!*



**WATCH  
VIDEOS  
HERE**



## GREEN MAMBA

### Powerful Cleaner & Degreaser

Green Mamba Cleaner and Degreaser delivers a fast strike against tough grease, grime, oil, and buildup, making it an ideal solution for industrial and professional cleaning applications. Its advanced formula cuts through the dirtiest jobs with lightning speed, leaving surfaces clean, residue free, and refreshed. Designed as one powerful solution for a wide range of cleaning and degreasing tasks, Green Mamba helps eliminate the need for multiple single purpose products.

Built for versatility and performance, Green Mamba is well suited for portable restroom interiors and exteriors, holding tanks, service equipment, floors, walls, base areas, tools, machinery, and shop surfaces. The product is easy to use and highly effective when diluted properly, allowing operators to apply by sprayer, mop, or other suitable methods. With its industrial strength cleaning power and multi purpose performance, Green Mamba delivers reliable results across demanding cleaning environments.

**Available in:**

1 Qt. (2 Qt. Min.), Qt. Case (12 Qt bottles per case), 1 Gal , 4x1 Gal Case, 5 Gal & 55 Gal



## HOME RUN

### Truck and Trailer Wash!

Our low pH urinal cleaner is a powerful acidic urinal cleaner that is specifically formulated to remove calcium deposits caused by urine and, with regular use, help reduce ongoing calcium buildup in portable restrooms. It works quickly and effectively to restore urinals and surrounding surfaces to a cleaner, more sanitary condition.

Beyond surface cleaning, this product also plays an important role in waste management performance. By lowering the pH of the waste, it helps keep contents within a range acceptable to waste treatment plants, supporting smoother downstream processing and compliance.

**Available in:**

1 Qt. (2 Qt. Min.), Qt. Case (12 Qt bottles per case), 1 Gal , 4x1 Gal Case, 5 Gal & 55 Gal



## J&J GREEN

### All-Purpose Super Concentrated Cleaner Removes Dirt, Grease And Stains

J&J Green is a versatile all purpose cleaner designed for a wide range of cleaning needs across portable toilets, trailers, and fleet vehicles. Its powerful yet gentle formula handles heavy duty messes as well as everyday maintenance, making it effective on counters, carpets, fabric, equipment, and hard surfaces. The ready to use formula can be used full strength for tough buildup or diluted for daily cleaning, giving operators flexibility across multiple applications.

J&J Green deodorizes as it cleans, leaving behind a refreshing lemon scent that improves overall cleanliness. Its non abrasive, non flammable, non caustic, and phosphate free formulation makes it safe for routine use on surfaces and equipment. Suitable for manual cleaning or use in floor scrubbers, carpet cleaners, pressure washers, and parts washers, J&J Green is a dependable solution for professional cleaning operations.

**Available in:**

1 Qt. (2 Qt. Min.), Qt. Case (12 Qt bottles per case), 1 Gal , 4x1 Gal Case, 5 Gal & 55 Gal





# LAVULOUS

## All-Purpose Cleaner for Restroom Trailers

Lavulous is an all purpose cleaner designed specifically for restroom trailers and interior surfaces. Its effective yet gentle formula provides reliable general cleaning without leaving behind any residue, helping maintain a clean and professional appearance in high end restroom environments.

Featuring a long lasting lavender scent, Lavulous freshens as it cleans while improving the overall experience for users. The ready to use formula makes daily maintenance quick and simple. Just spray on and wipe clean for consistent results. Lavulous is an ideal choice for keeping restroom trailers clean, fresh, and inviting.



# FRESH TRAP

## Waterless Urinal Treatment

Fresh Trap is a waterless urinal treatment designed specifically for no flush urinals in restroom trailers. This powerful liquid odor control solution traps urine odors at the source while releasing a long lasting fragrance, helping waterless urinals stay fresh and pleasant between services.

Formulated for consistent performance, Fresh Trap keeps waterless urinals smelling clean and inviting without the need for water or flushing. Its easy to use liquid format makes it ideal for routine maintenance in restroom trailers, delivering dependable odor control and a noticeably fresher experience for users.



# DISINTEGRATOR

## Waterless Urinal Treatment

Disintegrator is a natural black holding tank cleaner designed to clean tanks and remove waste buildup overnight in portable restroom trailers. This eco friendly treatment works by dispersing billions of beneficial bacteria that actively digest waste and sludge responsible for odors and poor tank performance.

Formulated as an all natural enzyme and bacteria treatment, Disintegrator begins working in as little as 12 hours, breaking down buildup while improving odor control without harsh chemicals. The easy to use dissolvable packet makes application simple and mess free, providing consistent results with minimal labor. Disintegrator is an effective solution for maintaining cleaner, better performing black holding tank systems in restroom trailers.

## HAND SOAPS & SANITIZERS

### GEL & FOAM SOAPS



#### HAND SANITIZER INSTANTLY

- Waterless hand wash
- Smooth gel disinfectant without needing to dry off hands
- Biodegradable



#### PINK LOTION HAND SOAP

- General-purpose, Instant sudsing
- Opaque pink formula
- Fresh clean fragrance
- For light/medium soil removal
- Contains Aloe & Vitamin E



#### ANTI-BACTERIAL LOTION SOAP

- Orange lotion soap
- Kills 99% of most disease causing germs
- Biodegradable



#### FOAMING HAND SANITIZER

- Waterless wash w/ Light lime fragrance
- Disinfectant that kills 99% of most disease causing germs
- Dye-Free & Alcohol-Free & Biodegradable



#### ANTI-BACTERIAL FOAMING HAND SOAP

- Spring-sweet citrus fragrance w/ Aloe and Vitamin E
- Golden Colored
- Kills 99% of most disease causing germs
- Biodegradable



#### FOAMING LUXURY SOAP

- Ruby red lotion soap
- Tropical fragrance with Aloe and Vitamin E
- Biodegradable

10-1000 ml boxless bags per case

6-1000 ml boxless bags

### GEL & FOAM SOAP DISPENSERS



#### FOAMING DISPENSER

Comes with Unique Push Pad Placement & Wall Mounted System  
- 6 per case



#### REFILLABLE SOAP DISPENSER

Perfect for J&J 80% Ethanol Gel Hand Sanitizer and the new improved Gel Pink Hand Soap.  
-24 per case



#### HAND GEL DISPENSER

Hand Soap Dispenser comes with Unique Push Pad Placement & Wall Mounted System  
- 12 per case

### HAND SANITIZERS AND PINK HAND SOAP



#### HAND SANITIZER ALCOHOL ANTISEPTIC 72% ETHANOL GEL

- Hand sanitizer helps to reduce bacteria that potentially can cause disease. Perfect to use when soap and water are not available.



#### PINK HAND SOAP

- Traditional Hand Cleaner that works well in both hot and cold water, as well as soft or hard water
- Fresh & Clean fragrance
- Pink color
- Biodegradable

## PRO ACCESSORIES

### BRUSH ASSORTMENT



**20" LONG HANDLE  
(#70) MAROON**

Long firm dense bristles



**20" LONG HANDLE  
(#78) TAN**

Long bristle brush



**20" LONG HANDLE  
(#43) GREEN**

Long soft bristles



**8 1/2" SHORT HANDLE  
(#68) MAROON**

Short firm dense bristles



**8 1/2" SHORT HANDLE  
(#75) TAN**

Short soft bristles



**10" GREEN  
TRUCK WASH BRUSH**

Will fit most screw-in  
type handles

### PUMP ASSORTMENT



**1 OZ PUMP - HEAVY DUTY**

Constructed with two glass ball  
valves to prevent leakage and  
resistant to fatigue



**SIPHON DRUM PUMP  
PUSH ACTION**

For 55 gallon Drum



**MR-50 PAIL PUMP #2**

For 5, 7 & 15 gallon pails  
Calibrations from 8-16 oz



**NX 200 DRUM PUMP**

For 55 gallon drums



**NYLON, PISTON ACTION  
DRUM PUMP (#44193)**

For 55 gallon drums

### SPIGOTS & WRENCHES



**3/4" SPIGOT**



**3/4" DRUM FAUCET  
BOTTLE REFILL**



**LARGE SPIGOT**  
For 55 gallon drums



**DRUM WRENCH**  
For 55 gallon drums



**PAIL WRENCH NYLON**  
70mm - 5 & 7 gal pails



**PAIL WRENCH ALUMINUM**  
70mm - 5 & 7 gal pails

### OTHER ACCESSORIES



**New &  
Improved  
Formula**

**PUMP PERFUME**

An ultra-concentrated pump oil  
additive that neutralizes vapor  
malodors at the molecular level,  
helping reduce customer complaints  
and call-backs. Cherry scented  
(color may vary).



**CHLORINATION TABLETS**  
**32 BOTTLES PER CASE**

Perfect for your portable sinks.  
225 tablets per bottle.



**CHLORINE NEUTRALIZER**  
**40 LB PAIL**

J&J Chlorine Neutralizer  
crystals protect your dye from  
premature breakdown due to  
chlorine in your water supply.



**DEGLACIATOR**

Deglaciator is the perfect freeze  
prevention solution for your free-  
standing hand wash stations and other  
equipment you need to protect during  
cold weather.



**GRAB-IT**

### ODO-MATIC ODOR NEUTRALIZER

J&J's Odo-Matic odor eliminating spray  
neutralizes most offensive odors. Works  
against malodors including urine, feces,  
food, body odors, decay, mildew, staleness  
and smoke.

#### Available sizes

1Qt (1 trigger sprayers), 12x1 Qt  
(1 trigger sprayers), & 5 Gal.

#### Available in these fragrances:

Cherry, Coconilla,  
Tahiti Breeze & Linen Fresh



### ODO-MATIC VPE

**Vacuum Pump Exhaust Deodorizing  
System for Waste Pump Trucks**

- Deactivate Offensive Odors
- Natural, Non-Toxic Formula
- Boost Customer Satisfaction



VPE 2" Exhaust - Small	19"L c x 6"H - 2 gal tank
VPE 3" Exhaust - Medium	20"L x 8"W x 10"H - 6 gal tank
VPE 4" Exhaust - Large	24"L x 12"W x 12"H - 14 gal tank
VPE Deodorizer	Available in 1 gal & 5 gal

## J&J Portable Sanitation Products

P.O. Box 614  
Crawford, GA 30630



PRSR STD  
U.S. POSTAGE  
PAID  
ATHENS, GA  
PERMIT #515

### J&J'S USA DISTRIBUTION CENTERS DIRECT SHIPPING FOR ECHO-SERIES PORTABLE TOILETS



### J&J Portable Sanitation Products

Crawford, GA • Porterville, CA • Kenosha, WI • Phoenix, AZ • Moab, UT

© 2026 J&J Portable Sanitation Products All rights reserved



1-800-345-3303  
706-743-1900  
fax 706-743-7515  
info@jjportable.com  
jjportable.com



@JJPortable



@JJPortable



@JJPortables

#### SUMMER HOURS:

8:00 A.M.-6:00 P.M. Est Mon-Thurs

8:00 A.M.-5:00 P.M. Est Fri

#### WINTER HOURS:

8:00 A.M.-5:30 P.M. Est Mon-Thurs

8:00 A.M.-5:00 P.M. Est Fri

